



香港教育大學

The Education University
of Hong Kong

Senior Year
Admissions
Two-year Full-time

EdUHK Programme Code: A2B101

Bachelor of Social Sciences (Honours) in
**Sociology and
Community Studies**

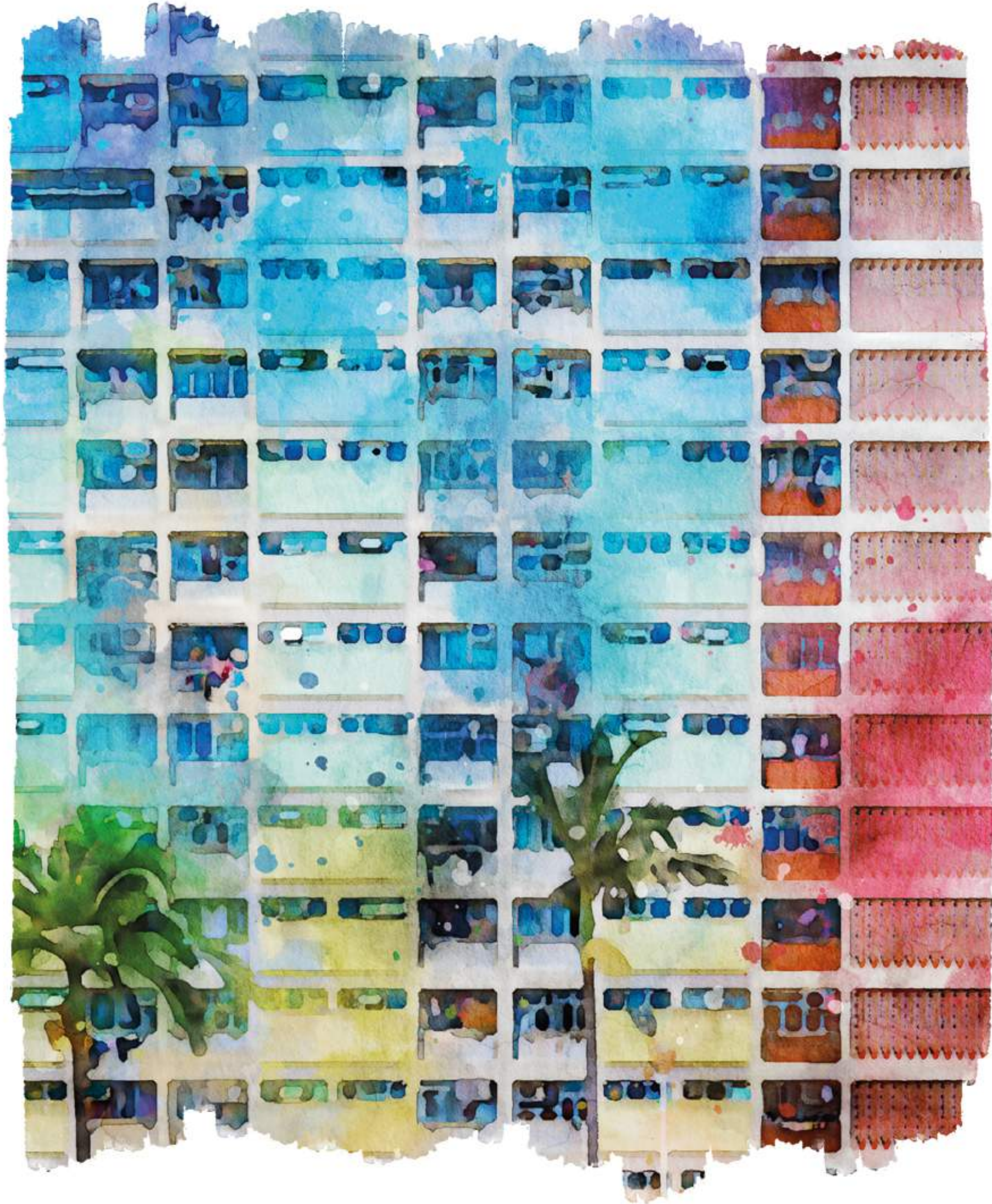


FACULTY OF LIBERAL ARTS AND SOCIAL SCIENCES

博文及社會科學學院

Bachelor of Social Sciences (Honours) in Sociology and Community Studies

Two-year Full-time



Programme Aims

- To equip students with sociological perspectives to understand the transformations and developments of Hong Kong, China and the world;
- To enhance students' conceptual and problem-solving skills with a view to promoting personal growth and community sustainability; and
- To develop students' competency in using appropriate research methodologies in social inquiries.

Programme Features

Sociology-based

- Analyses the development of Hong Kong and the regional community with the use of appropriate sociological concepts and theories.

Community-driven

- Develops practical and sustainable plans for promoting the betterment of communities at local and regional levels.

Experiential Learning

- Enables students to apply their knowledge and skills through participating in internship.



Experience Sharing

CHIN Yuet Shan Joyce 2024 Graduate

“The Capstone Project is a hallmark feature of the University’s education. During the Capstone Project, I have the precious opportunity to develop a community-based experiential learning package for primary school students. The holistic academic support provided by the University not only enhanced our self-confidence but also laid a solid foundation for our career preparedness.”

LI Hong Chun Travis Year 2 Student

“BSocSc (SCS) programme provides me with various opportunities to understand our community and the world, and to draw connections between our interests and the community through a sociological lens. It offers many workshops and resources to students, learning through lectures and experiencing the community with hands-on field visits and activities. The staff and lecturers are very supportive and friendly.”



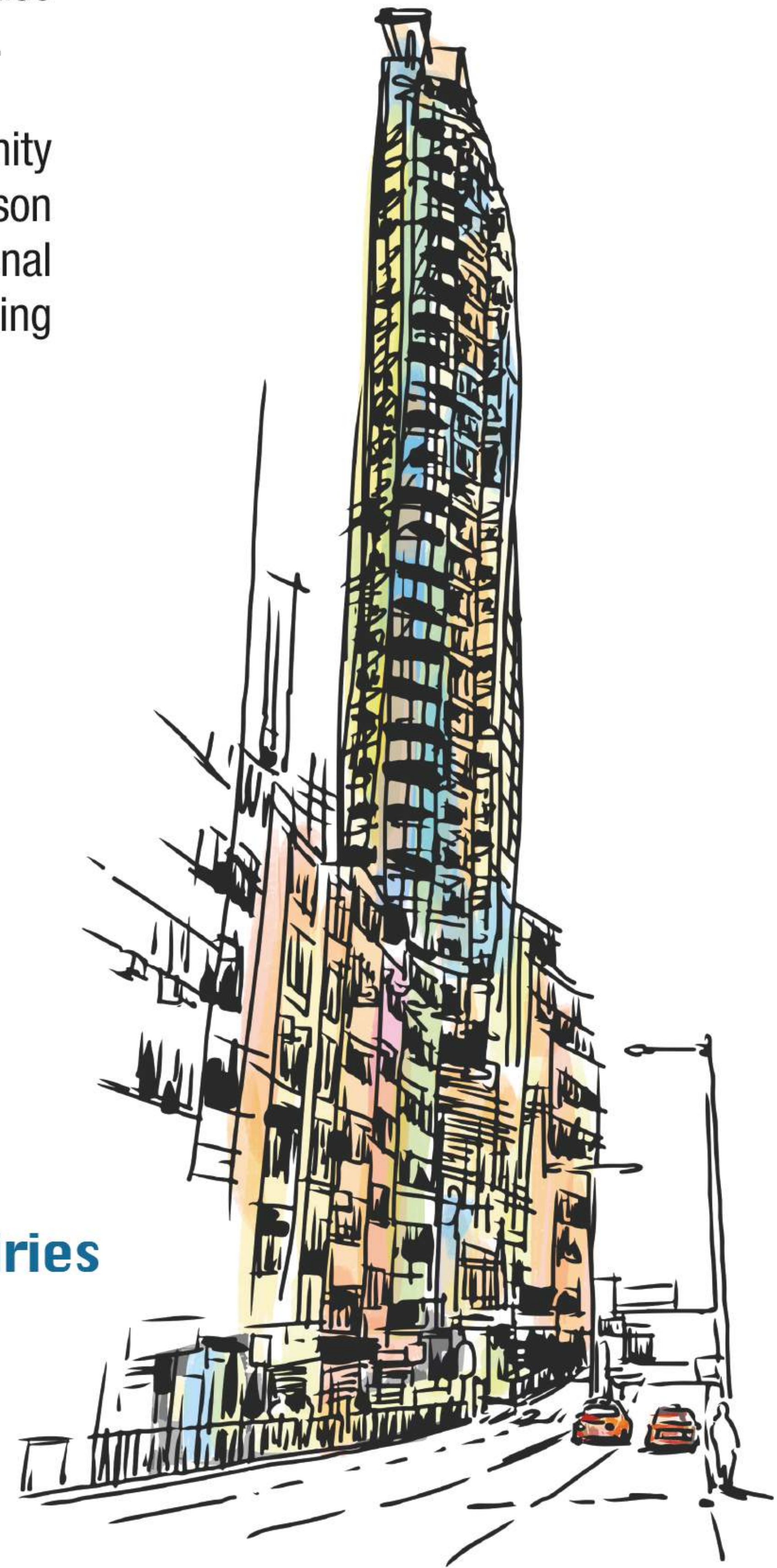
Programme Structure

Domain		Credit Points
Major	<ul style="list-style-type: none">• Major Core• Major Electives• Cross-Faculty Core Course• Major Interdisciplinary Course• Internship	18 6 3 3 3
Electives / Minor		15
General Education		6
Final Year Project (Honours Project / Capstone Project)		6
Total		60


Career Prospects

This programme will pay special attention to the fostering of portable skills and generic competencies that could be applied in a wide range of professional settings. The programme's emphasis on equipping students with a full range of research tools, both qualitative and quantitative, will benefit students' career development significantly. Its focus on a sociological perspective in community contexts will also ensure that much of what students learn here would have practical applications.

Graduates can find employment across a wide range of fields, including: community development workers, non-governmental organisation officers, community liaison officers in government departments and public organisations, international aid/development workers, public relations officers, social and marketing researchers, research assistants in academic institutions, and youth workers.




Admission Enquiries

 (852) 2948 6886

 admission@eduhk.hk

 www.apply.eduhk.hk/ug

Programme Enquiries

 (852) 2948 7707

 jclee@eduhk.hk



As the 2025/26 academic year is the beginning of the 2025/26 - 2027/28 triennium, the programmes to be offered in the 2025-28 triennium with allocation of UGC-funded places are still subject to the Government's approval.

Every effort has been made to ensure the accuracy of the information contained in this leaflet. Changes to any aspects of the programmes may be made from time to time as due to change of circumstances and the University reserves the right to revise any information contained in this leaflet as it deems fit without prior notice. The University accepts no liability for any loss or damage arising from any use or misuse of or reliance on any information contained in this leaflet.

Any aspect of the courses and course offerings (including, without limitation, the contents of the course and the manner in which the course is taught) may be subject to change at any time at the sole discretion of the University if necessary. Without limiting the generality of the University's discretion to revise the courses and course offerings, it is envisaged that changes may be required due to factors including staffing, enrolment levels, logistical arrangements, curriculum changes, and other factors caused by change of circumstances. Tuition fees, once paid, are non-refundable.

Students admitted into this programme are required to visit the Greater Bay Area (GBA) and/or other parts of Mainland China. The programme may also require students to participate in other non-local learning experience for completion of the programme. While the visits are subsidised, students are required to contribute part of the estimated cost of the visits ("students' contribution"), whereas any personal entertainment, meals expenses, travel document fee and personal insurance costs shall be at students' own expense. The estimated cost of the visits and students' contribution for students admitted to the coming cohort is yet to be available due to a variety of factors such as inflation of cost of the visits, trip duration, traveling expenses, the exchange rate, etc.