

EdUHK

Undergraduate Programme Introduction

Department of Science and Environmental Studies (SES)



科學與環境學系
Department of Science
and Environmental Studies

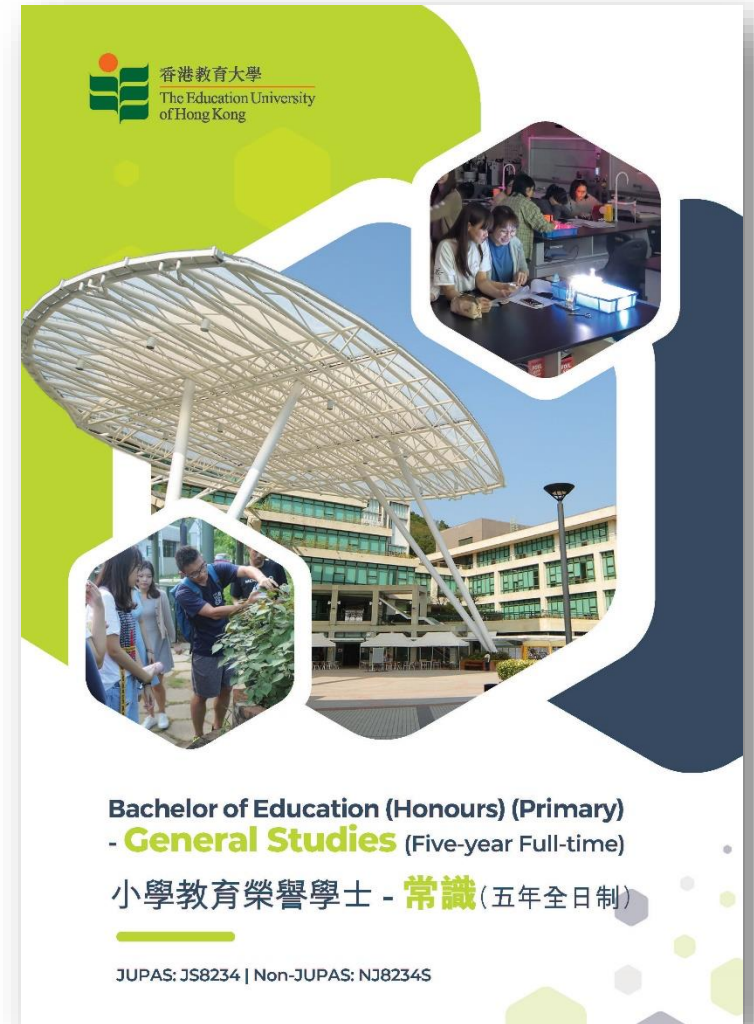
Tel: 2948 7669
Email: dses@eduhk.hk



Bachelor of Education (Honours) (Primary) – General Studies (Humanities and Science) (Five-year Full-time) 小學教育榮譽學士 - 常識 (人文及 科學) (五年全日制)

JUPAS Code: JS8234

Non-JUPAS Code: NJ8234S



Programme Aims

This programme aims to prepare **outstanding primary school teachers** who:

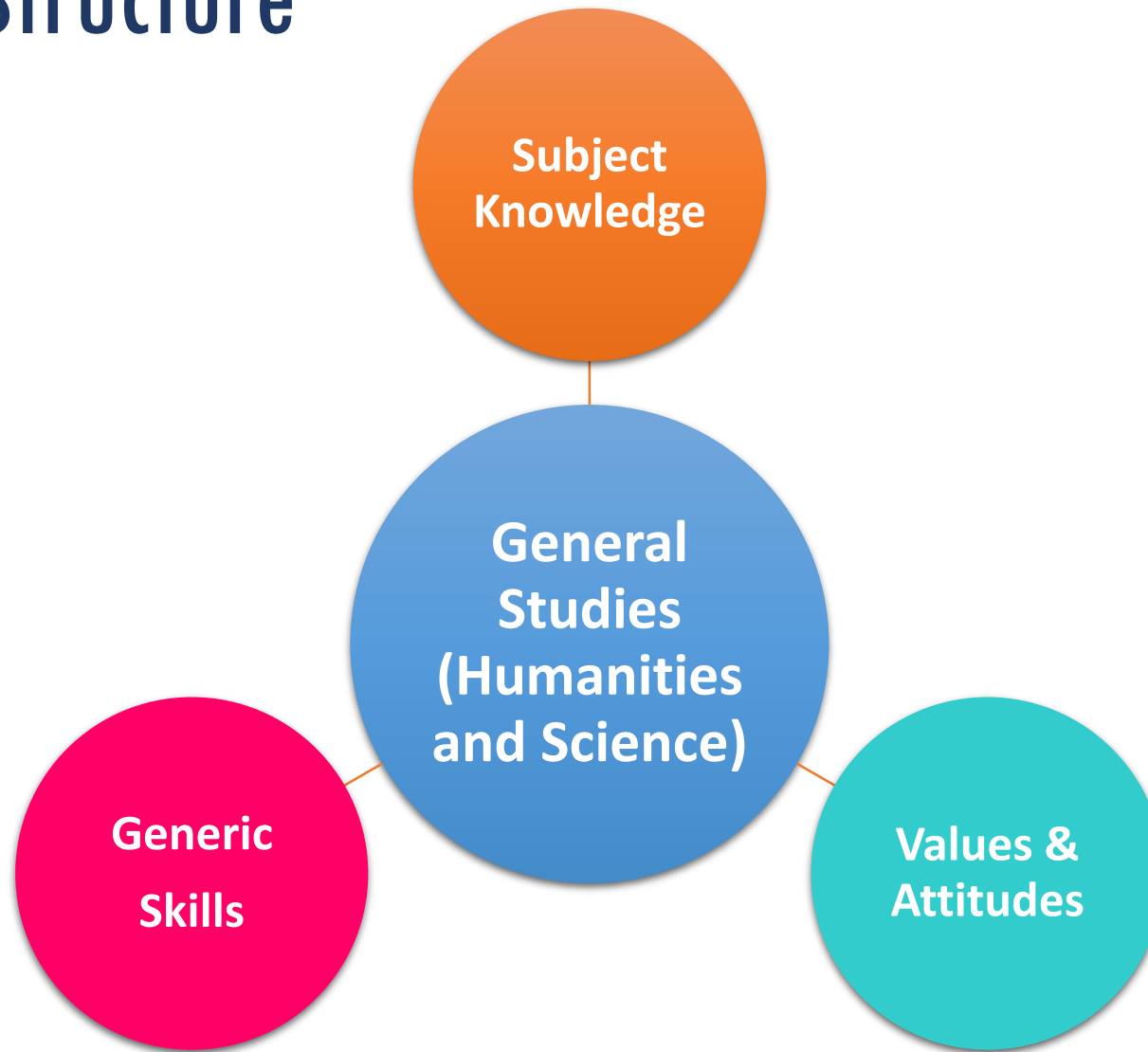
- possess the **generic skills** (e.g., problem solving, critical thinking, creativity, study skills, communications, information technology, etc.) that are essential for learning in the Information Era and for making sense of social and environmental issues;
- are well-acquainted with the **spirit and methods of inquiry**;
- are well-equipped with the **social and scientific inquiry skills**;
- that come into play in the teaching and learning of General Studies;
- have the **competence** to ride the tide of the new curriculum reforms; and
- are able to play **a significant role** in curriculum development in the school context.

Programme Aims

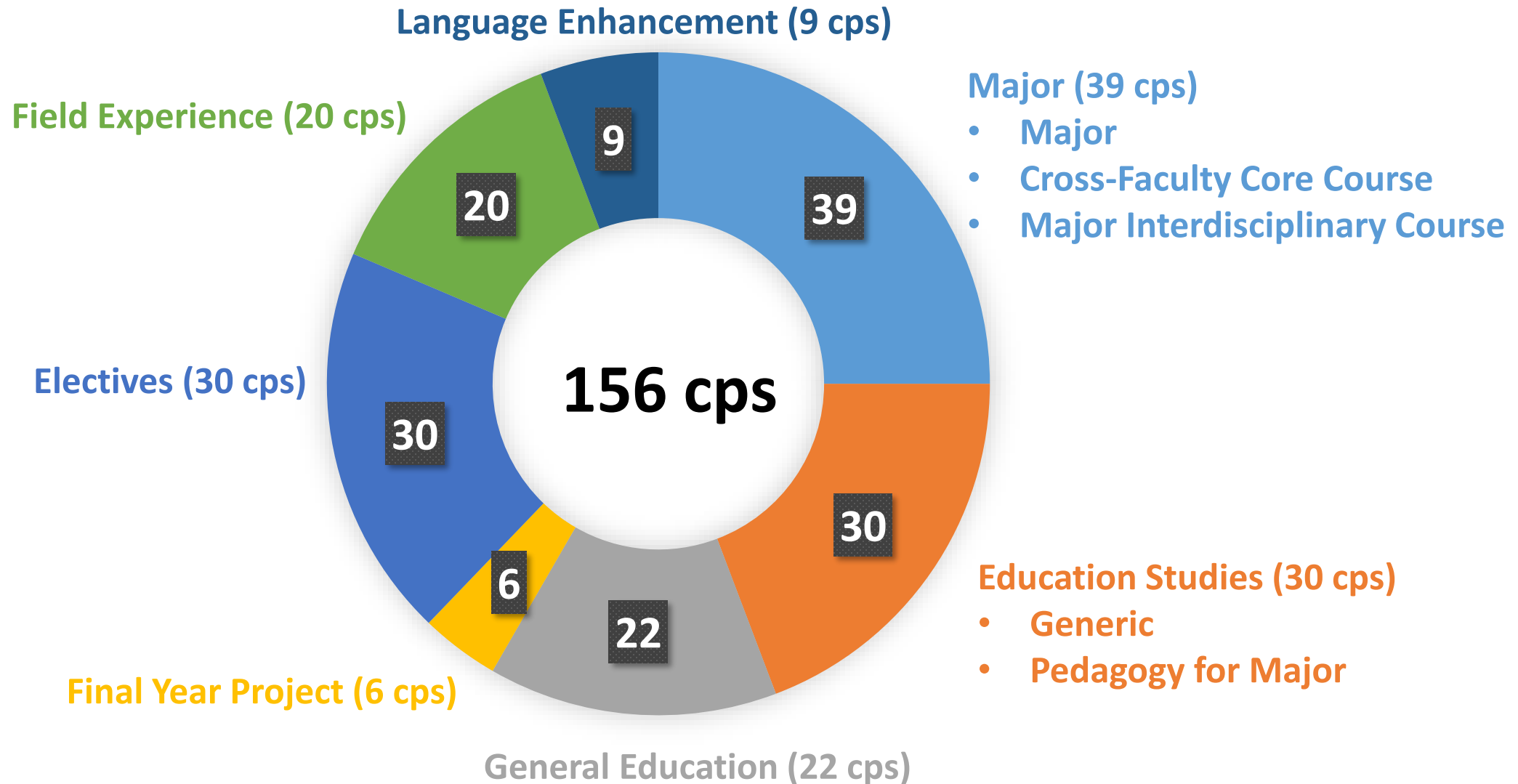
This programme aims to prepare **outstanding primary school teachers** who:

- have **positive professional attitude**;
- have sound **academic knowledge** and broad-based professional knowledge and skills;
- have lifelong learning skills and are able to appreciate **moral, social and cultural values**;
- can **work collaboratively** with students, parents, colleagues, school administrators and other professionals;
- understand **education issues** of Hong Kong and will react to educational innovations positively

Programme Structure



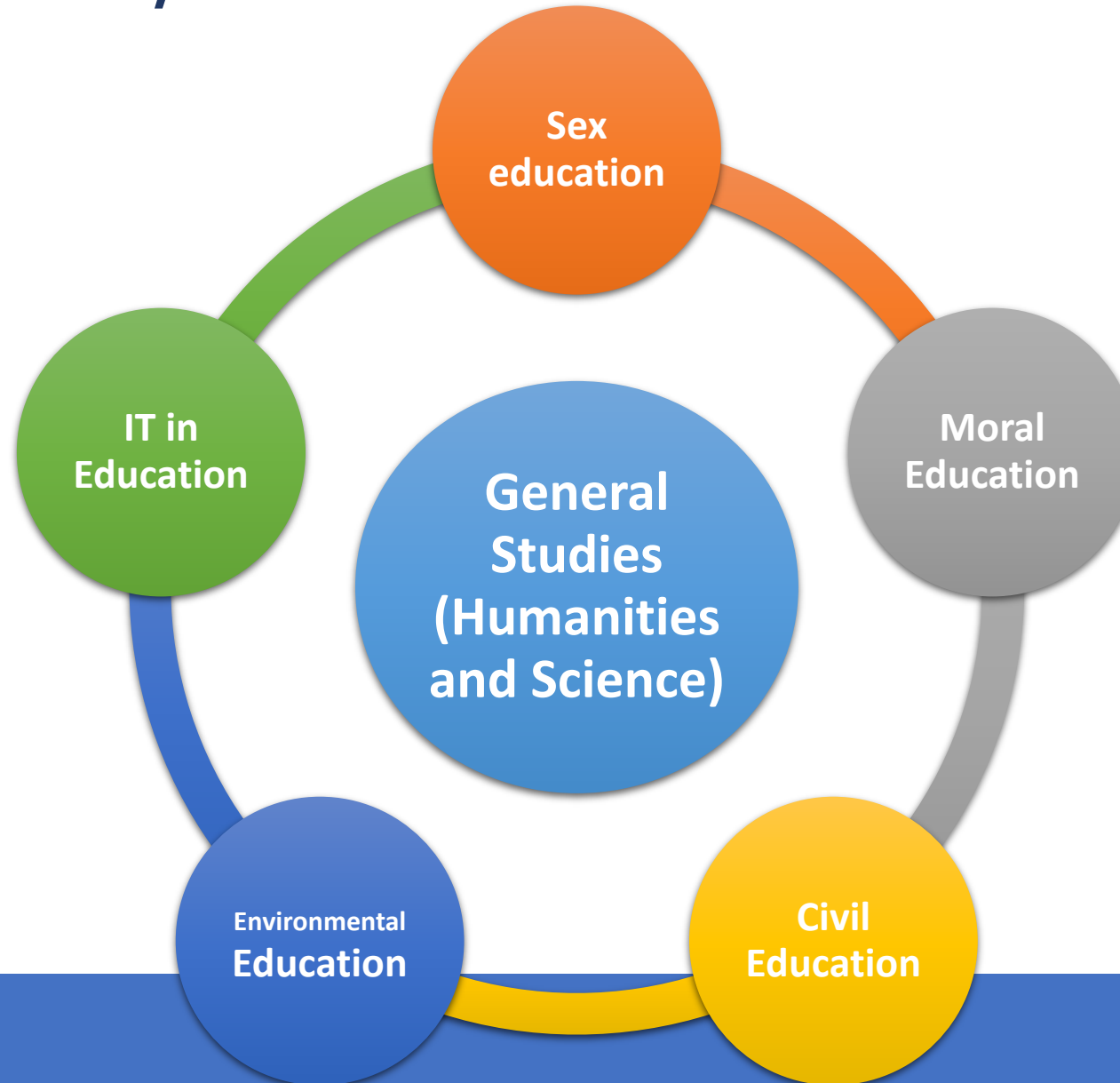
Programme Structure



BEd(P)-GS (H&S) Major Core Courses (39 cps)

Course
Chinese Culture and Identity
Science in the Contemporary World
Natural World
Personal Financial Planning
Healthy Living
The Study of Society: An Introduction
Environmental Studies
Science, Technology and Society
Globalization: Trends and Development
Hong Kong: Community and Citizenship
Interdisciplinary Concepts and Thinking (<i>Major Interdisciplinary Course</i>)
Trends and Development in Humanities and Science
Cross-Faculty Core Courses

Interdisciplinary Curriculum



Central Curriculum of General Studies (Humanities and Science)

- Health and Living
- People and Environment
- Science and Technology in Everyday Life
- Community and Citizenship
- National Identity and Chinese Culture
- Global Understanding and the Information Era



General Studies (Humanities and Science) in Primary School Curriculum

- Holistic Education
- Life-Wide Learning
- Student-Oriented



Cultural Exploration / Scientific Inquiry Activities



Service-Based Learning



Entrance Requirements

BEd(P)-GS

Core Subjects	Minimum Level
CHINESE LANGUAGE	3
ENGLISH LANGUAGE	3
CITIZENSHIP AND SOCIAL DEVELOPMENT	Attained
MATHEMATICS COMPULSORY PART	2

Elective Subject(s)	Minimum Level
ANY 2 SUBJECT*	2

*Note: excluding Applied Learning Chinese

Retrieved from JUPAS Website
<https://www.jupas.edu.hk/en/programme/eduhk/JS8234/>

JUPAS Application Statistics

BEd(P)-GS (H&S) Figures (As of Sept 2023)

Retrieved from JUPAS Website

<https://www.jupas.edu.hk/en/programme/eduhk/JS8234/>

Application Statistics (after Modification of Programme Choices)

Year	Band A	Band B	Band C	Band D	Band E	Total
2023	598	778	976	999	732	4083
2022	789	905	1000	981	697	4372
2021	787	796	920	921	670	4094

▼ more

Offer Statistics (as at the Announcement of the Main Round Offer Results)

Year	Band A	Band B	Band C	Band D	Band E	Total
2023	23	0	0	0	0	23
2022	24	6	0	0	0	30
2021	39	3	0	0	0	42

▼ more

Enquiries for BEd(P)-GS (H&S)

Registry

Tel: (852) 2948 6886

Email: admission@eduhk.hk

Programme

Dr Choi Tat Shing

Tel: (852) 2948 7470

Email: tschoi@eduhk.hk



Programme Information

小學教育榮譽學士 - 常識（人文及科學）
(五年全日制)

**Bachelor of Education (Honours) (Primary) –
General Studies (Humanities and Science)
(Five-year Full-time)**

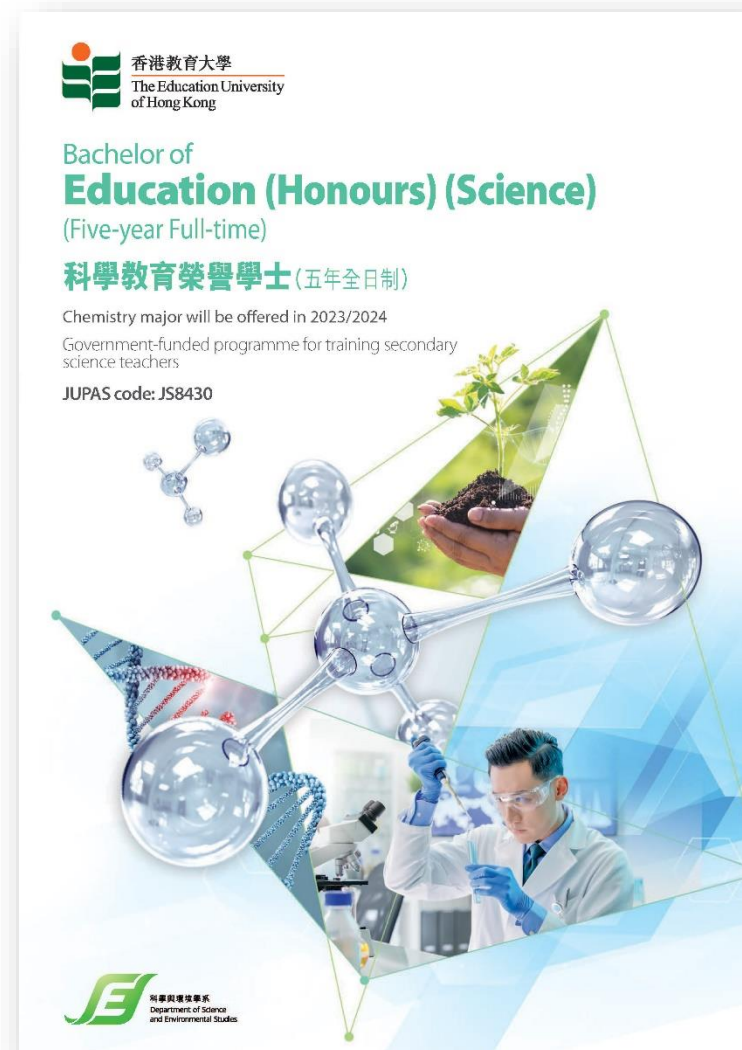
JS8234

科學教育榮譽學士 (五年全日制)

Bachelor of Education (Honours) (Science) (Five-year Full-time)

JUPAS Code: JS8430

Non-JUPAS Code: NJ8430S

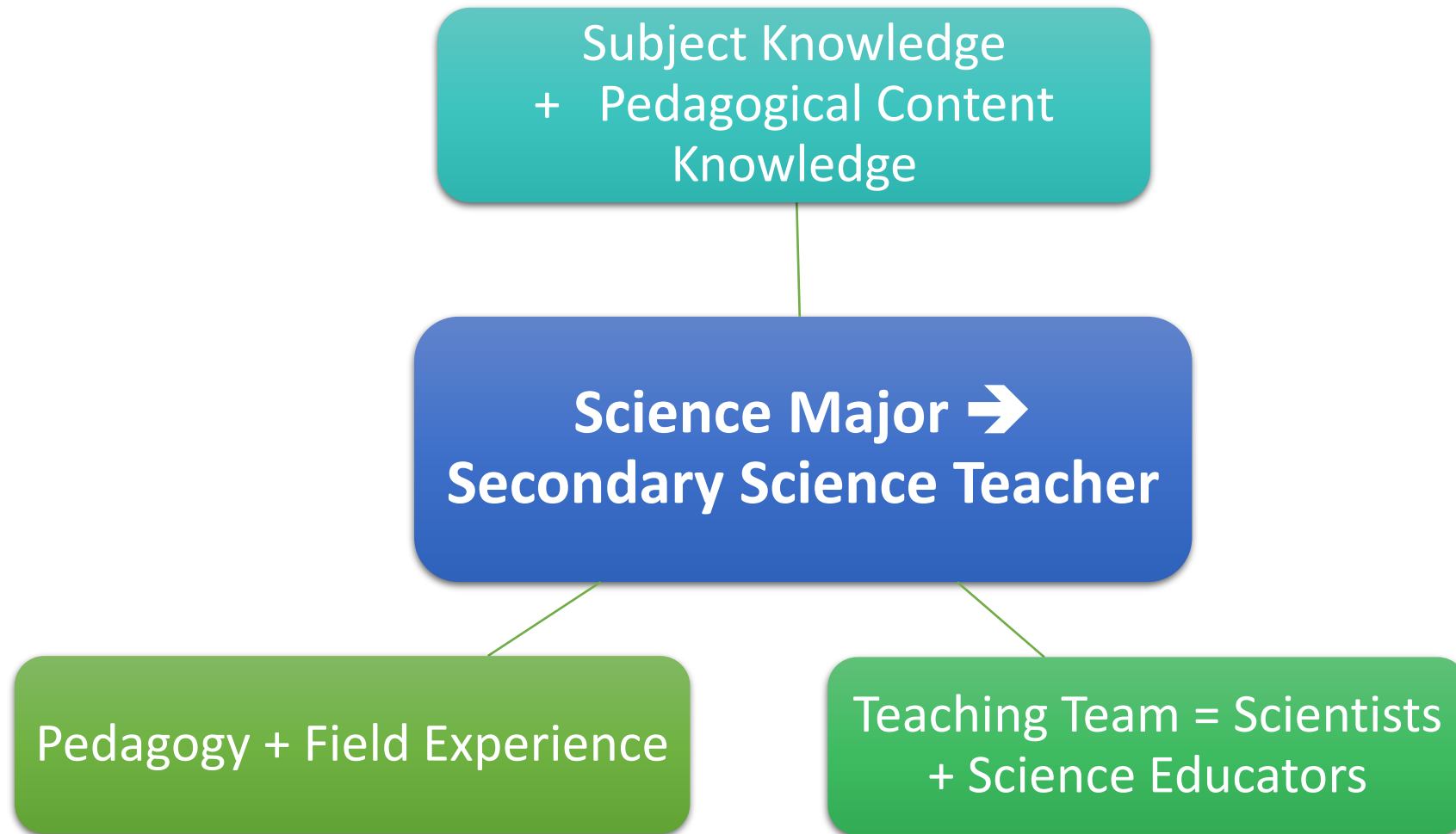


Programme Aims

The programme aims to prepare qualified, competent, professional secondary science teachers who:

- Demonstrate command and understanding of the subject matter and pedagogical content knowledge of one science discipline, Chemistry
 - Apply science knowledge and skills together with appropriate pedagogies to teaching students with diversified abilities and backgrounds, and in different school settings
 - Exhibit professional competence and attitudes in teaching junior secondary science utilise different generic skills
 - Exhibit proficiency in biliteracy and trilingualism in Chinese and English
 - Critically and creatively analyse in the local, national and global contexts
 - Display commitment to teaching
- * Biology major will be offered in 2024/25*

Programme Features



Programme Structure

Major (39 cps)

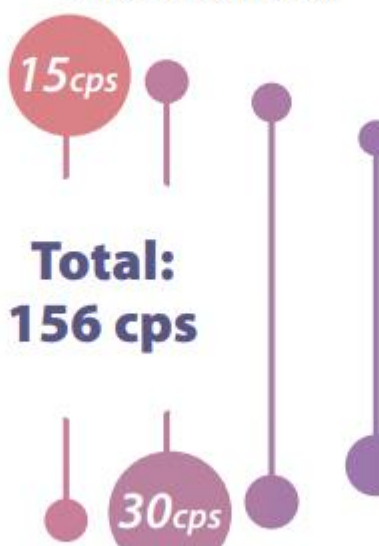
- Foundation and Major Courses (33 cps)
- Cross-Faculty Core Course (3 cps)
- Interdisciplinary Course (3 cps)



Minor in Junior
Secondary Science
(JSS) (15 cps)

Electives (15 cps)

- Free Electives (15 cps); OR
- Second Minor (15 cps)



**Total:
156 cps**

Education
Studies (30 cps)

General Education (22 cps)



Final Year
Project
(6 cps)

Field Experience (20 cps)



Language
Enhancement (9 cps)

Curriculum Chart

Year	Sem	Major (Chemistry)				Education Studies (Note 1)	General Education (Note 2-4)		Final Year Project (Honours Project / Capstone Project) (Note 5)	Electives	Minor	Field Experience (Note 3)	Language Enhancement (Note 6)	
1	1	Major 6 cps				Education Studies 3 cps	GE Foundation Course 4 cps (Note 7)	GE Breadth Courses 9 cps		Electives 15 cps (0 - 6 cps per semester)	Minor Core 3 cps		Language Enhancement 6 cps	
	2	Major 3 cps				Education Studies 3 cps					Minor Core 3 cps			
2	1	Major 6 cps				Education Studies 3 cps						Minor Core 3 cps	FE Foundation Course 3 cps (Note 7)	
	2	Major Interdisciplinary Course 3 cps				Education Studies 3 cps								Minor Core 3 cps
3	1	Major 6 cps			Education Studies (Pedagogy for Major) 3 cps	Education Studies 3 cps			GE Experiential Learning 6 cps					
	2											Block Practice I 5 cps FE & Professional Learning Portfolio I 2 cps		
4	1	Major 6 cps		Cross-Faculty Core Course (Component I) 1 cp	Education Studies (Pedagogy for Major) 3 cps	Education Studies 3 cps	University ePortfolio 3 cps		GE Experiential Learning 6 cps		Electives (see above)	Minor Core 3 cps		
	2	Major 6 cps		Cross-Faculty Core Course (Component II & III) 2 cps (Note 8)						Honours Project I / Capstone Project I 3 cps				
5	1									Honours Project II / Capstone Project II 3 cps (Note 7)		FE Semester 7 cps FE & Professional Learning Portfolio II 3 cps		
	2										Electives (see above)			

Major & Compulsory Minor Courses

** Biology major will be offered in 2024/25.*

Foundation and Major Courses	Genetics and Evolution
Foundations of Science and STEM Education	Biotechnology: Principles and Applications
Studies in Forms and Processes of Life	Mathematical Modelling and Computing for Scientific Investigation
Biodiversity	Cross-faculty Core Courses
Plant and Animal Physiology	Compulsory Minor in Junior Secondary Science
Ecology	Teaching and Learning of Junior Secondary Science
Human Anatomy and Physiology	Chemistry Principles
Human Health and Diseases	Advanced Chemistry Principles
Cells and Microbiology	Mechanics and Waves
Environmental Pollution and Toxicology	Electricity and Energy

Learning Activities

Field Visits



Laboratory Practices Experiments



Other FE enhancement activity



Career Prospects



2022 Employment Status

2022 Employment Status

Employment Status:



89% Employed + 5% Further Studies

Employment Field:



94% Education + 6% Non-education

Average Monthly Salary: \$33,867

Entrance Requirements

BEd(Sci)

Core Subjects	Minimum Level
CHINESE LANGUAGE	3
ENGLISH LANGUAGE	3
CITIZENSHIP AND SOCIAL DEVELOPMENT	Attained
MATHEMATICS COMPULSORY PART	2
Elective Subject(s)	Minimum Level
Elective 1: BIOLOGY, CHEMISTRY, PHYSICS, or equivalent qualification*	4
Elective 2	2

*Note: At least one subject from the above list or equivalent qualifications.

**Preferred HKDSE subjects with the highest weighting for admission score calculation include:
Biology/ Chemistry/ Physics**

Retrieved from JUPAS Website

<https://www.jupas.edu.hk/en/programme/eduhk/JS8430/>

JUPAS Score Calculation for 2025 Entry

- The admission score is the sum total of the level/grade values of the best five HKDSE subjects (i.e., Best 5), regardless of whether they are core or elective subjects and excluding the Citizenship and Social Development subject.

Scoring Scale:

Category A: Core and Elective Subjects

Level	5**	5*	5	4	3	2	1
Score	7	6	5	4	3	2	1

Subject Weightings for JUPAS Score Calculation:

Subject	Subject Weightings
Biology	x 1.5

JUPAS Application Statistics

BEd(Science) Figures (As of Sep 2023)

Application Statistics (after Modification of Programme Choices)

Year	Band A	Band B	Band C	Band D	Band E	Total
2023	249	336	444	497	520	2046
2022	227	312	408	496	413	1856
2021	173	246	310	456	358	1543

[▼ more](#)

Offer Statistics (as at the Announcement of the Main Round Offer Results)

Year	Band A	Band B	Band C	Band D	Band E	Total
2023	13	0	0	0	0	13
2022	16	1	0	0	0	17
2021	12	0	0	0	0	12

[▼ more](#)

Retrieved from JUPAS Website

<http://www.jupas.edu.hk/en/programme/eduhk/JS8430/>

Enquiries for BEd(Science)

Registry

Tel: (852) 2948 6886

Email: admission@eduhk.hk

Programme

Dr Leung Chi Fai

Tel: (852) 2948 8790

Email: cfleung@eduhk.hk

Ms Melissa Tong

Tel: (852) 2948 8390

Email: mtwtong@eduhk.hk



Programme Information

科學教育榮譽學士 (五年全日制)
Bachelor of Education (Honours)
(Science)
(Five-year Full-time)
JS8430

EdUHK Self Nomination Admissions Scheme for STEAM-related Programmes

- The EdUHK Self-Nomination Admissions Scheme is designed for JUPAS applicants with exceptional potential and outstanding talent in music, sports, **STEAM**, or visual arts.
- **Applicants can submit their self-nominations to the [BEd\(Sci\)](#)**
- Applicants shortlisted will be interviewed in February or June. Students with excellent performance in the interview(s) will be given priority of admission if deemed appropriate.



www.apply.eduhk.hk/ug/selfnom

EdUHK Self Nomination Admissions Scheme for STEAM-related Programmes

Eligibility

- Put BEd(Sci) as **Band A choice(s)** in JUPAS application;
- Obtain high-performance standards in respective STEAM areas with relevant achievements;
- Recommended by relevant associations/ organisations/ schools (optional but preferable).

Application Deadline

29 May 2024 (2nd round)

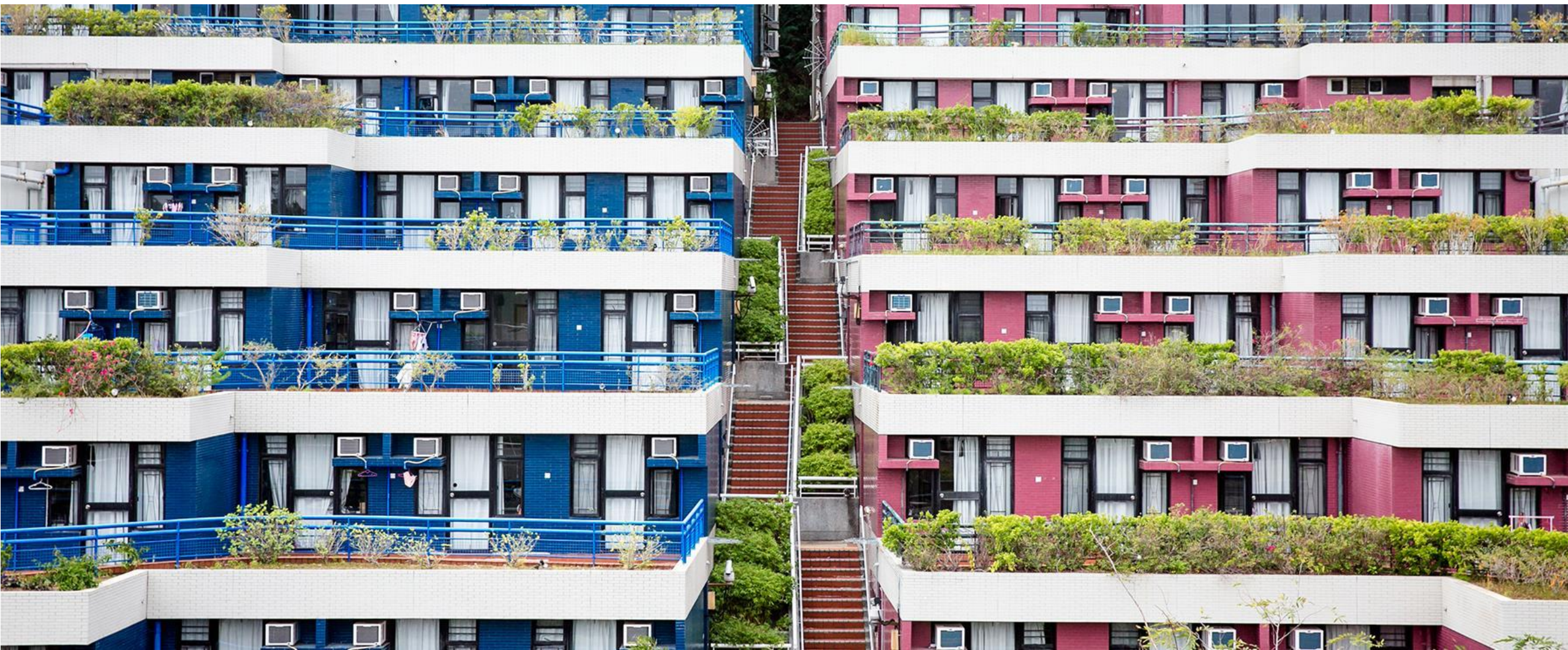


www.apply.eduhk.hk/ug/selfnom

University Campus

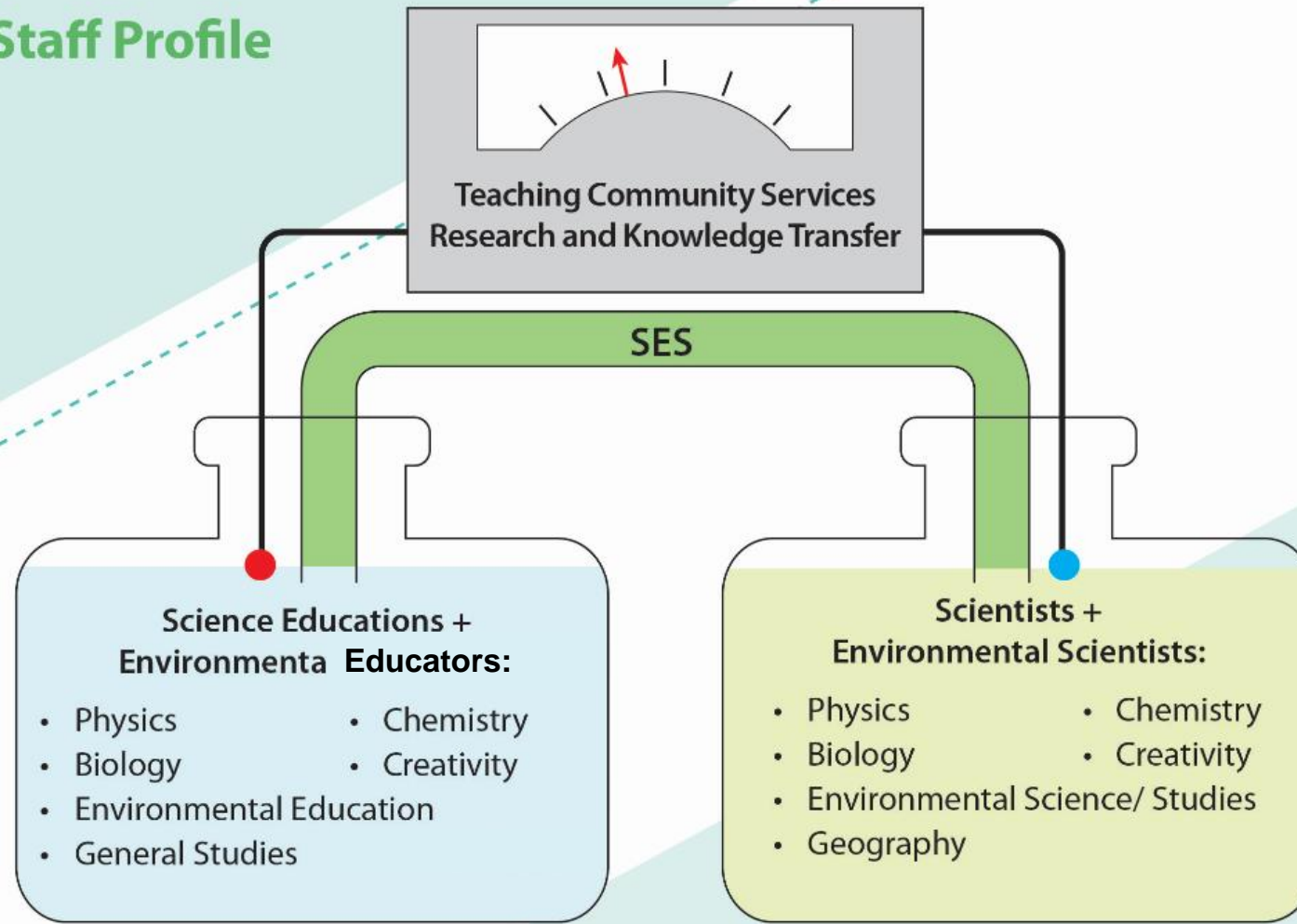


Student Hostels



About SES Department

SES Staff Profile



SES Department and Facilities

Laboratory of Marine Pollution (Consortium Member of State Key Laboratory of Marine Pollution (SKLMP))



Physics Laboratory



Chemistry Laboratory



Astronomical optics laboratory



Biology Laboratory

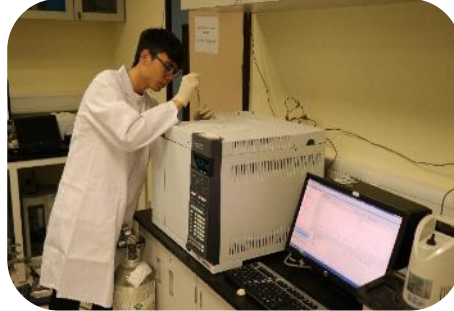


STEM Laboratory

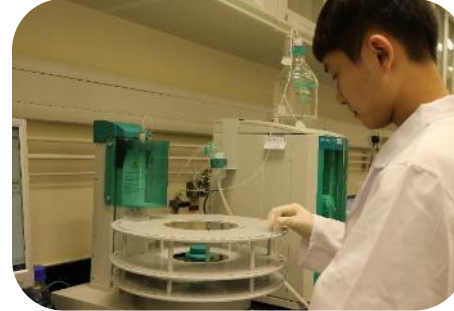
SES Department and Facilities



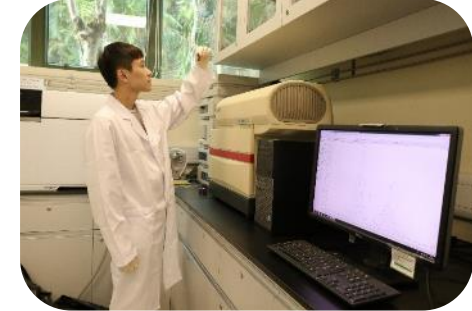
Inductively Coupled
Plasma Mass Spectrometry
(ICP-MS)



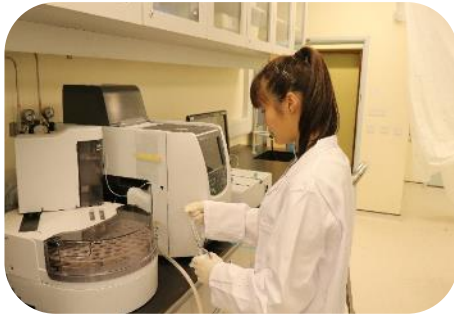
Gas Chromatography(GC-
FID/TCD/FPD Analysis)
GC-(FID/TCD)



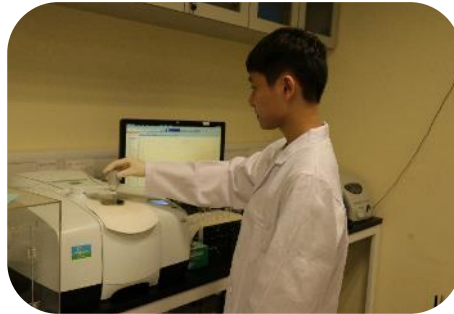
Ion- Chromatography



High-Performance Liquid
Chromatography (HPLC)



Total Organic Carbon
Analyzer (TOC-L)



Fourier Transform Infrared
Spectroscopy (FTIR)

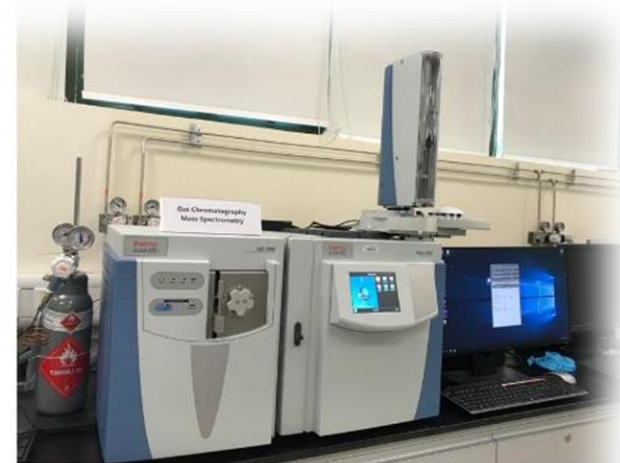


3D Printer



Laser Cutter

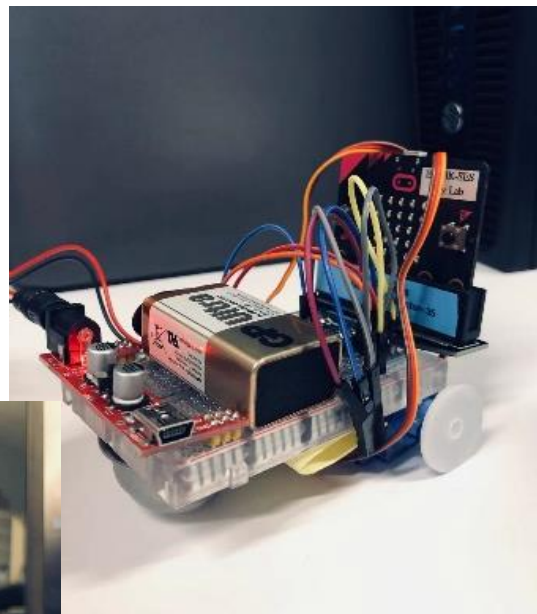
SES Department and Facilities



Ultracentrifuge and CHNO/S elemental analyzer

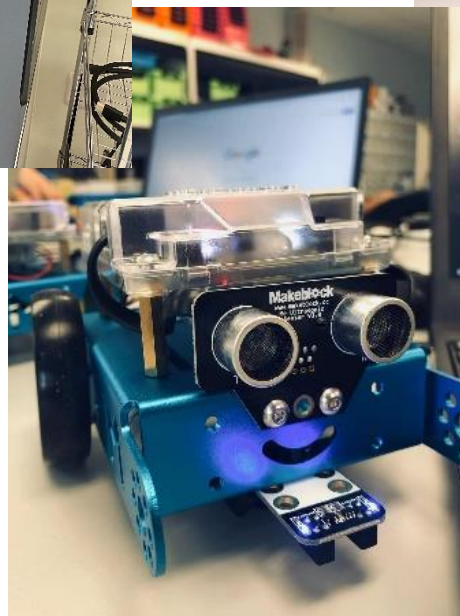
LCMSMS and GCMS

SES Department and Facilities



STEM Laboratory

- ▶ Laser Machine
- ▶ 3D Printer
- ▶ Make block Robotics
- ▶ Drilling Machine
- ▶ Many different tools for STEM experiments



SES Department and Facilities



Established in 2016, which serves several purposes:

- ▶ Facilitating the University's development of environmental studies;
- ▶ Providing education for sustainability;
- ▶ Enhancing students' knowledge and awareness of environmental protection.



Overseas Learning Opportunities

Korea



Japan



Jilin Province



Singapore



Malaysia



Informal Learning



Students have opportunities to participate in...



GBA Tour





Eco-garden Farmers and Surveyors 生態園農夫與生物多樣性調查隊

Tel: 2948 7669
Email: dses@eduhk.hk

Diving Team 潛水隊



科學與環境學系
Department of Science
and Environmental Studies

Student Scholarship & Achievement



The Ninth Hong Kong Outstanding
Prospective Teachers Award -
Golden Award
NG Chi-Hong



The Ninth Hong Kong Outstanding
Prospective Teachers Award -
Silver Award
LO Ying-Tung



AIA Scholarships
Tong Wing-yi



HSBC Hong Kong Scholarship
2021/22
Chan Hoi-yan



C Me Fly Persevering Star
Partnership Scheme - Persevering
Star (Senior Group) & scholarship
Chan Hoi-yan



The Hong Kong Jockey Club (HKJC)
Scholarship
Chan Man-kit

More Information

Department of Science and Environmental Studies

Tel: 2948 7669

Email: dses@eduhk.hk



www.eduhk.hk/ses



Survey



https://eduhk.au1.qualtrics.com/jfe/form/SV_5zhDDNPPSBVMRcW

Disclaimer

Every effort has been made to ensure that information contained in this PowerPoint is correct. Changes to any aspects of the programmes may be made from time to time due to unforeseeable circumstances beyond our control and the University reserves the right to make amendments to any information contained in this website without prior notice. The University accepts no liability for any loss or damage arising from any use or misuse of or reliance on any information contained in this PowerPoint.

Any aspect of the course and course offerings (including, without limitation, the content of the course and the manner in which the course is taught) may be subject to change at any time at the sole discretion of the University. Without limiting the right of the University to amend the course and its course offerings, it is envisaged that changes may be required due to factors such as staffing, enrolment levels, logistical arrangements, curriculum changes and other factors caused by unforeseeable circumstances.. Tuition fees, once paid, are non-refundable.

Students admitted into this programme starting from the 2023/24 cohort are required to visit the Greater Bay Area (GBA) and/or other parts of Mainland China. Programme may also require students to participate in other non-local learning experience for completion of the programme. While the visits are heavily subsidised, students are still required to contribute part of the estimated cost of the visits ("student contribution"), whereas personal entertainment, meals expenses, travel document fee and personal insurance costs will not be supported. The estimated cost of the visits for students admitted to the 2024/25 cohort is not available yet as it is subject to a variety of factors such as changes to the cost of the visits as a result of inflation, trip duration, traveling expenses, the exchange rate, etc. The exact amount of student contribution is thus not available.