

# Bachelor of Social Sciences (Honours) in Sociology and Community Studies (Two-year Full-time)

## When Communities Meet Sociology...

Dr. MOK Ka Tung Francis  
Associate Program Leader of BSCS  
program

# 社會學與社區研究

榮譽社會科學學士



What is  
Sociology???



# DAILY NEWS

World - Business - Finance - Lifestyle - Travel - Sport - Weather

Issue: 240104

THE WORLDS BEST SELLING NATIONAL NEWSPAPER

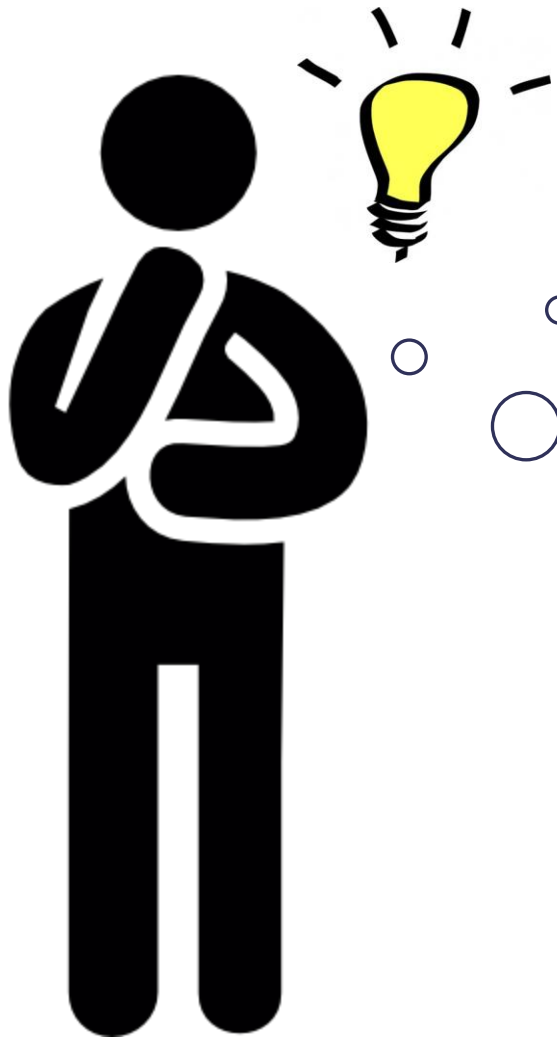
Est - 1965

First Edition

Monday 5th June



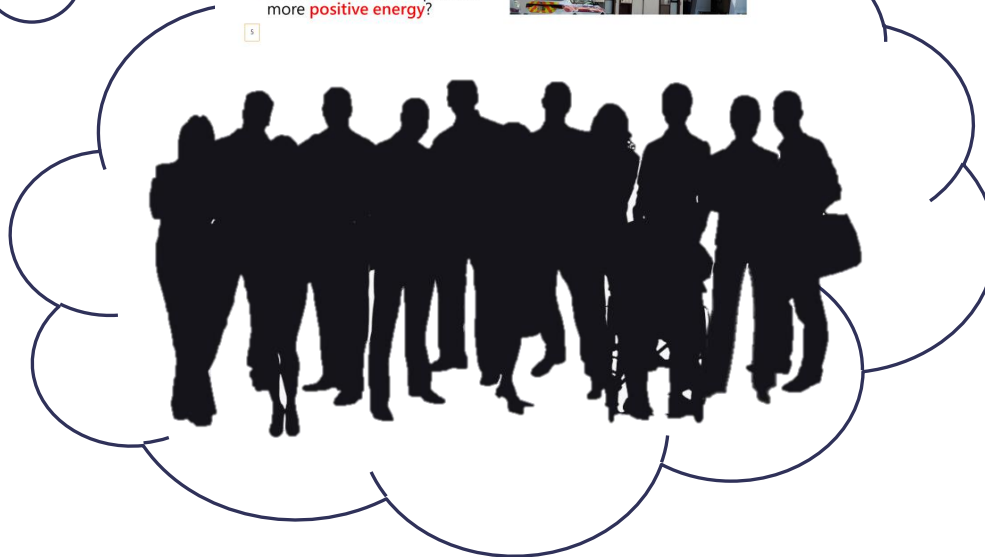
# Sociological imagination is ...



## EXAMPLE ONE: SUICIDE CASES IN HONG KONG

"Girl falls to her death at Yuen Long secondary school (7 Oct. 2021)"

- Usual questions:
- What's **wrong** with them?
- How come students were so **weak, immature, or irrational**?
- Were those individuals having character, financial, or emotional **problems**?
- What could we do to provide more **positive energy**?



Private troubles



Public issues



# EXAMPLE ONE: SUICIDE CASES IN HONG KONG

“Girl falls to her death at Yuen Long secondary school (7 Oct. 2021)”

- Usual questions:
  - What’s **wrong** with them?
  - How come students were so **weak, immature, or irrational**?
  - Were those individuals having character, financial, or emotional **problems**?
  - What could we do to provide more **positive energy**?



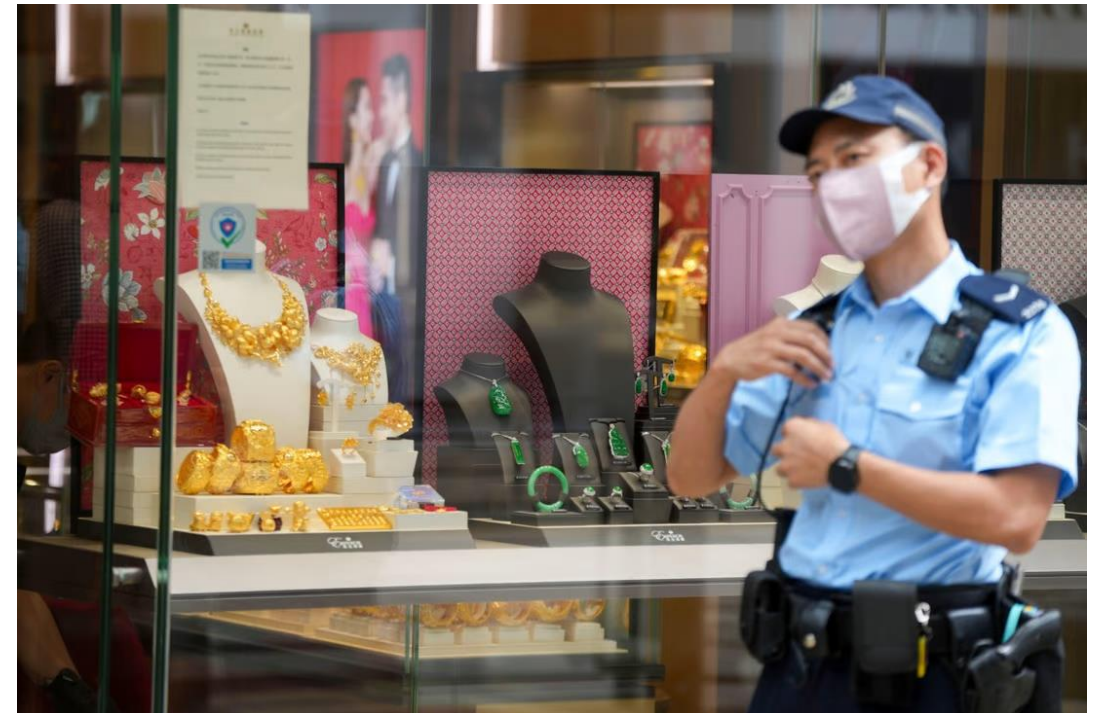
# THE SOCIOLOGICAL PERSPECTIVE:

- It is more a **social phenomenon** than an individual problem.
- Growing number of suicide cases could only be explained by **wider social, economic, or demographical** changes or trends.
- What wider social changes lead to the growing **sense of isolation and hopelessness** among people?



# EXAMPLE TWO: HONG KONG'S INCREASING CRIME RATES

- Earlier this month, a diamond necklace worth as much as **HK\$22 million** (US\$2.8 million) was stolen from a jewellery shop in Tsim Sha Tsui.
- A total number of 49,927 crimes were recorded in the first nine months of 2022, which represents a **4.4% increase** as compared with that of 2021.





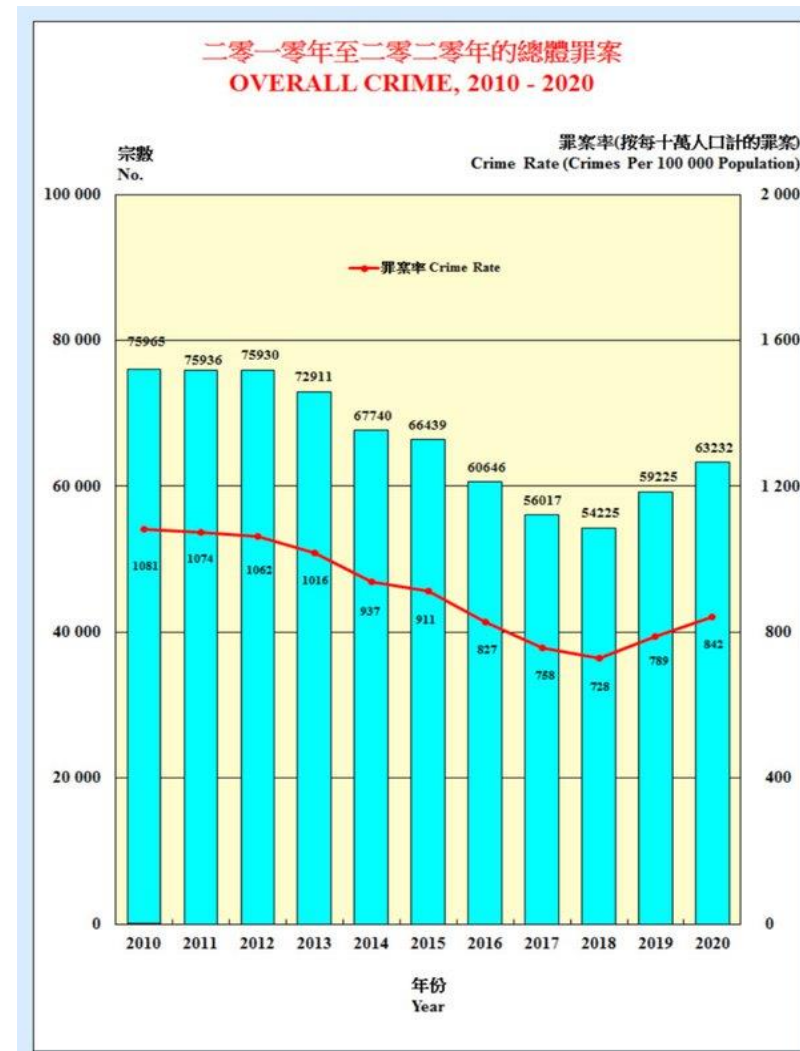
# HONG KONG'S INCREASING CRIME RATES

- **Usual questions:**
  - How come so many people dared to break the laws?
  - What's their problem?
  - Is there anything wrong with their education and upbringing?
  - How are we going to correct them?



# THE SOCIOLOGICAL PERSPECTIVE:

- What are the **wider social changes** that are responsible for the increase of crimes?
- What are the factors leading to the **declining authority** of the law?
- To what extent **socioeconomic changes** drive people to take risks?



# EXAMPLE THREE: THE CASE OF HOMELESS PEOPLE

- How would you explain the presence of homeless people in Hong Kong ?
- From the conventional perspective:  

---
- From the sociological perspective:  

---







# When Communities Meet Sociology

Community x Sociology

# Individual Level

When was the last time you chatted with your neighbor?

If you are going to bring your friends to visit your community, where would you take them to visit?



# Local Level

In your impression, are the playgrounds in your community fun to play?

When was the last time you involved in a community event?



西環變幻時

Public group · 100.7K members

將軍澳主場

Private group · 127.1K members

大埔 TAI PO

Public group · 64.8K members



# Regional and Global Level

Do you feel you belong to any regional or global communities?

What would you do for the community?



BTS - "Permission to Dance" performed at the United Nations General Assembly | SD...  
United Nations · 33M views · 1 month ago



Zara Jackson 2 小時前

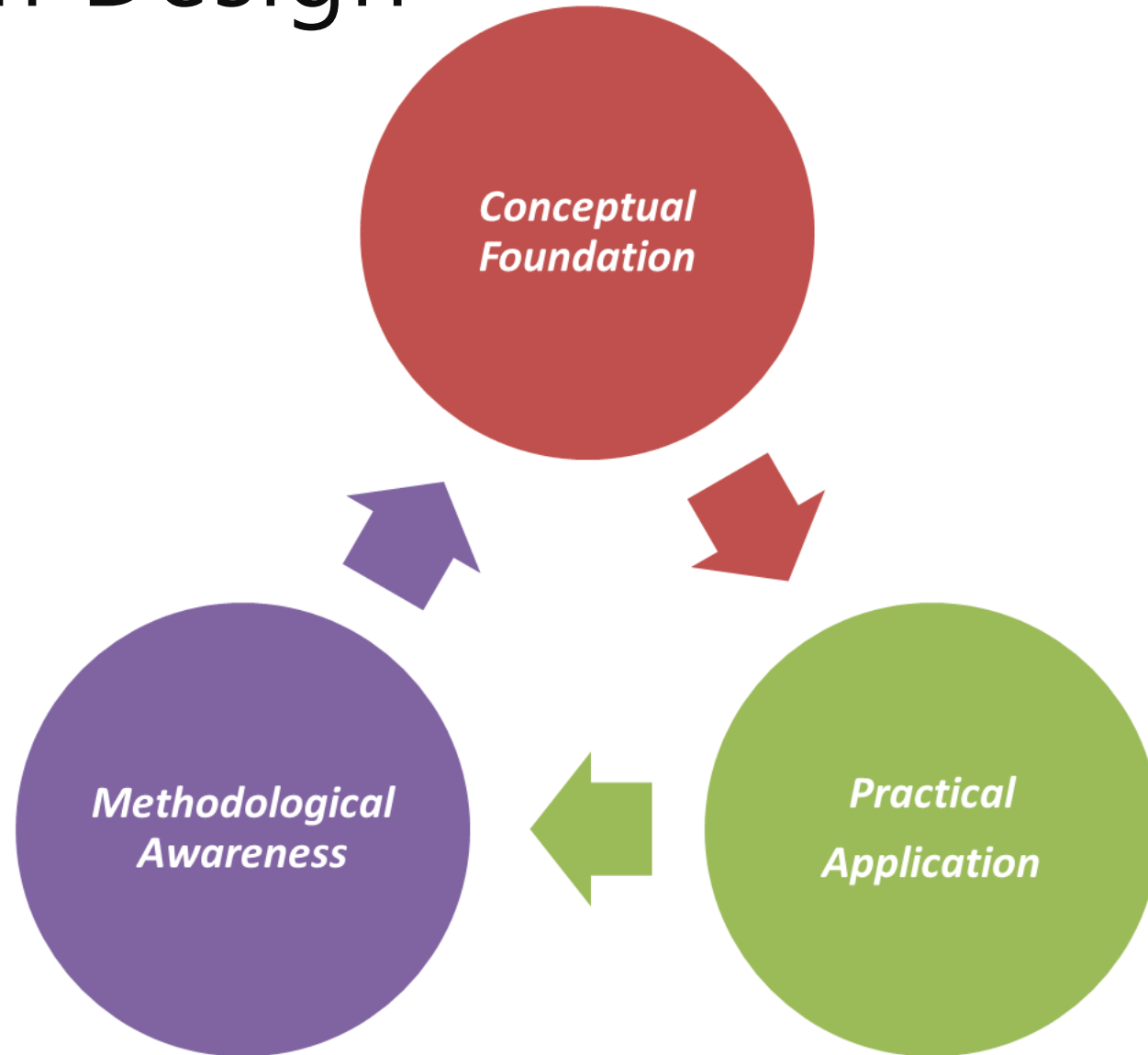
The presence of different languages in the comments shows that love can connect us all! ❤️

👍 9 🗨️ 回覆

# Programme Features



# Curriculum Design



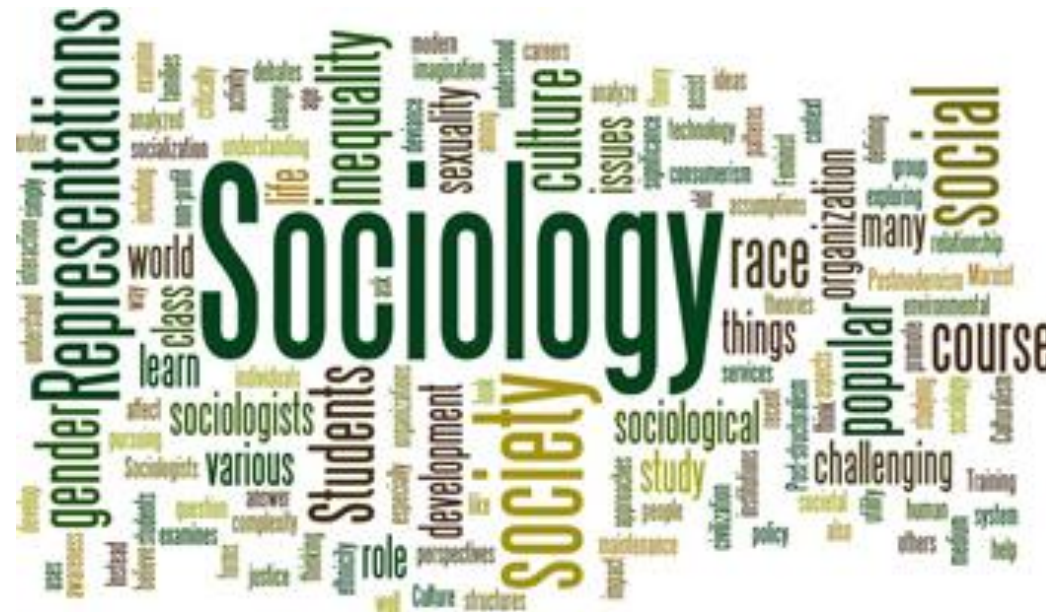


# Curriculum Design

## (1) Sociology-based Conceptual Foundation

*Conceptual  
Foundation*

- Familiarize students with **key concepts** considered as the building blocks of **sociological analyses**.



# Curriculum Design

## (2) Methodological Awareness

*Methodological  
Awareness*

Honours  
Project I:  
Introduction  
to Social  
Research



Qualitative  
Research  
Methods



Quantitative  
Research  
Methods



Honours  
Project II:  
Research  
Report



# Curriculum Design

## (3) Practical Application

Practical  
Application

- Provide ample opportunities for students to **link their sociological knowledge with different community concerns and opportunities.**



Provide Community Education and Artwork Showcase Exhibition in primary school about Lung Yeuk Tau



Lead outdoor classroom in discussing historical buildings in Lung Yeuk Tau



# Curriculum Design

## (3) Practical Application

*Practical  
Application*

- Enable students to apply their knowledge and skills through **participating in community projects and internship**



Coach the primary students to share their knowledge and creative ideas to others



Supervising secondary school students to do Tin Shui Wai studies and making video presentation

# Prospective Internship Partners of SSPS

## Social Service Non-governmental Organisations (NGOs)



## Environmental NGOs



## Business Sector/ Social Enterprise



## Education Sector



## Non-local Internship



And more...

# Two Optional Minors

## Education and Society

Introduces the linkage between **education, social development and ethics**

## Sustainable Tourism

Introduces the linkage between **the environment, community development and the tourist sector**



# Academic Mentorship

## Proactive Mentoring Scheme

- Help students **develop a clear vision and plan** of their study and career in the academic and societal context
- Mentor get to know mentees by teaching an orientation course to the programme and oversee their progress over 2 years



# Global Learning Enhancement Fund (GLEF)

All with **\$10,000 subsidy** facilitates students in participating in cross-cultural outreach activities



Study Tour in Vancouver (June 2019)



Study Tour in Den Haag,  
the Netherlands (Dec 2019)

# Career Prospects



# Learn, Reflect and Decide on Your Future Pathways



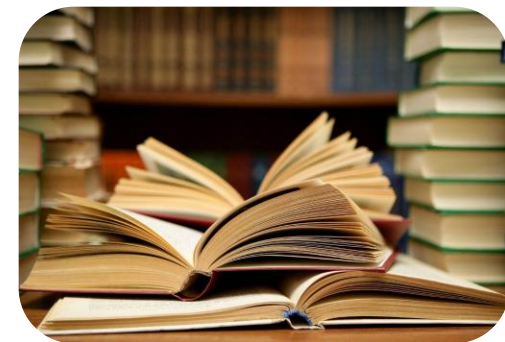
Community-related  
Careers



Diverse Career  
Options



Educational Careers  
via PGDE



Further Studies for  
Professional or  
Academic Pathways

# University as Adventure -- Let's Go!







香港教育大學  
The Education University  
of Hong Kong

A2B101

Bachelor of Social Sciences (Honours) in  
Sociology and Community Studies  
(Two-year Full-time)



FACULTY OF LIBERAL ARTS AND SOCIAL SCIENCES  
博文及社會科學學院

More information  
on the programme's webpage:  
[https://www.apply.eduhk.hk/ug/  
programmes/scs](https://www.apply.eduhk.hk/ug/programmes/scs)



Follow our Facebook and Instagram



Facebook:  
Sociology and Community  
Studies/SCS.EdUHK



Instagram:  
eduhkscs



A2B101  
Bachelor of Social Sciences (Honours) in  
Sociology and Community Studies  
(Two-year Full-time)



## Questions and queries?

### Admission-related

Tel: (852) 2948 6886

Email: [admission@eduhk.hk](mailto:admission@eduhk.hk)

### Programme-related

Tel: (852) 2948 7707

Email: [jclee@eduhk.hk](mailto:jclee@eduhk.hk) (Ms. Lee)

A2B101  
Bachelor of Social Sciences (Honours) in  
Sociology and Community Studies  
(Two-year Full-time)



**Thank you for attending our session.  
Please take a few minutes to complete the  
following survey.**

[https://eduhk.au1.qualtrics.com/jfe/form/SV\\_3Kv47Pwy8k32TAi](https://eduhk.au1.qualtrics.com/jfe/form/SV_3Kv47Pwy8k32TAi)



# Bachelor of Social Sciences (Honours) in Sociology and Community Studies

