



Faculty of Education
and Human Development

教育及人類發展學院



Department of
PSYCHOLOGY

心理學系

Bachelor of Social Sciences (Honours) in Psychology

Department of Psychology
The Education University of Hong Kong

Dr. LEUNG Nga Man Angel
Programme Leader

Dr. HO Chun Yip Henry
Admission Officer



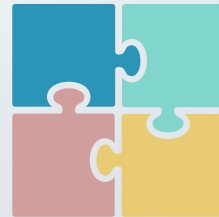
INTRODUCTION TO THE DEPARTMENT OF PSYCHOLOGY





ARE YOU READY TO BE A PSYCHOLOGIST?

- + Are you interested in people?
- + Do you want to understand people?
- + Do you want to help people?
- + Do you have a scientific mind?





WHAT DO PSYCHOLOGISTS DO?

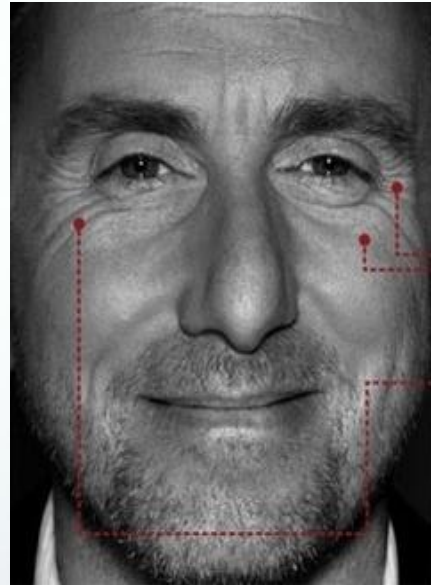
- + Here are just some examples:
 - + Provide psychological assessment and intervention
 - + Clinical psychologist
 - + Design curriculum, motivation students to learn
 - + Educational psychologist
 - + Provide therapeutic guidance on wellbeing and growth
 - + Counselling psychologist
 - + Provide staff training and development
 - + Industrial-organizational psychologist



HOW IS CHOW YUN FAT FEELING?



How is CHOW YUN FAT FEELING?



happiness

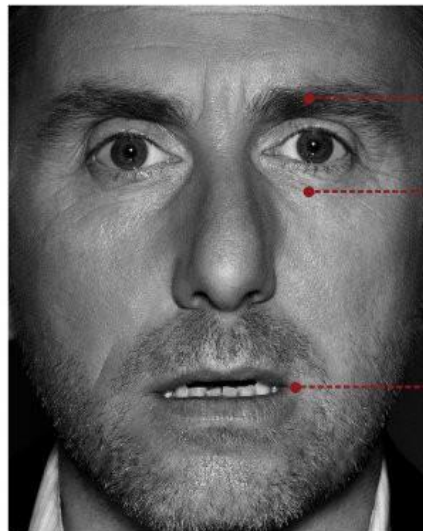
A real smile always includes:

- ① crow's feet wrinkles
- ② pushed up cheeks
- ③ movement from muscle that orbits the eye

How is CHOW YUN FAT FEELING?



How is CHOW YUN FAT FEELING?



surprise

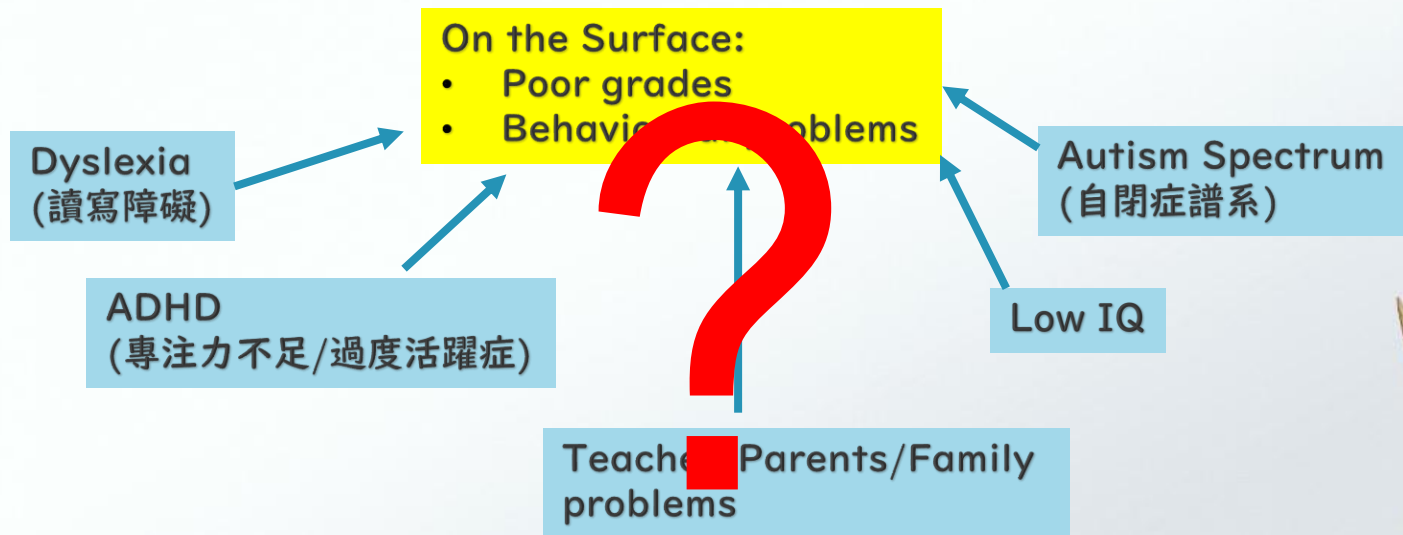
Lasts for only one second:

- ① eyebrows raised
- ② eyes widened
- ③ mouth open

THINK ABOUT THIS CASE

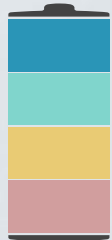
- + Jimmy (Male/Grade 3)
 - + *Often wanders off from his seat and talked to his classmates while the teacher was talking.*
 - + *Jimmy was unable to answer questions as if he was not paying attention to what the teacher has said.*
 - + *He has poor performances in all subjects except arts and physical education.*
- + *→What problems does Jimmy have?*
- + *→What is the cause of the problems?*

JIMMY (MALE/GRADE 3) → WHAT PROBLEMS DOES HE HAVE?



PSYCHOLOGISTS HELP DEAL WITH PRACTICAL PROBLEMS SUCH AS

- + Helping people overcome depression, stress, or trauma
- + Easing the effect of parental divorce on children
- + Helping to deal with addictions
- + Helping alleviate educational problems
- + Speeding up recovery from brain injury
- + Helping to stop or prevent bullying
- + Helping people to be happy at work and perform well
- + Helping athletes to perform better...



GENERIC INTENDED LEARNING OUTCOMES

**Problem
Solving
Skills**



**Oral &
Written
Communication
Skills**



**Critical
Thinking
Skills**



**Ethical
Decision
Making**



PROGRAMME INTENDED LEARNING OUTCOMES

Graduates can competently integrate the science and application of psychology, and can implement evidence-based practice:

1. **Demonstrate** professional knowledge of the major principles/theories of psychology
2. **Apply** major psychological principles/theories to **analyze** human behaviours in real life situations
3. **Utilize** major psychological principles/theories innovatively and responsibly to address issues locally as well as globally
4. **Evaluate** research evidence using scientific principles and ethical standards
5. **Design and carry out** psychological research professionally and ethically to create new knowledge and insights relevant to the needs of Hong Kong and beyond



PROGRAMME STRUCTURE*

Total: 121 credit points (cps)

*The programme structure is subject to change.

Major (60cps)

Foundation and Core Courses
(including Major Inter-disciplinary course & Cross-Faculty Core Course)

(30cps)

Major Electives

(21cps)

Internship

(3cps)

Final Year Project

(6cps,
2 courses)



Electives
(30cps, 10 courses)

General Education
(22cps, 7 courses)

Language Enhancement
(English and Chinese)
(9cps, 3 courses)

PROGRAMME STRUCTURE*

(SENIOR-YEAR ENTRY)

Total: 60 credit points (cps)

*The programme structure is subject to change.

Major (39cps)

Foundation
and Core
Courses
(including
Major Inter-
disciplinary
course)

(27cps)

Major
Electives

(3cps)

Internship

(3cps)

Final Year
Project

(6cps,
2 courses)



Electives
(15cps, 5 courses)

General Education
(6cps, 2 courses)

INTERNSHIP PARTNERS



香港童軍總會
Scout Association of Hong Kong



香港路德會社會服務處
Hong Kong Lutheran Social Service, LC-HKS



共融教室
Link Education



東華三院力勤幼稚園
TWGHs Nickon Kindergarten



基督教豐盛生命堂
家寧社會服務中心
FAMILY LINKS SOCIAL SERVICES

PEACE }
GENERATION }
和平世代 }



香港婦女中心協會
HONG KONG FEDERATION OF
WOMEN'S CENTRES



New Life
Psychiatric Rehabilitation Association
新生精神康復會



Save the Children
救助兒童會

EXPERIENTIAL LEARNING ACTIVITIES

- + Student Exchange Programmes
 - + Australia, Germany, UK, Korea, Sweden, Norway, Spain, Taiwan, Mainland, Netherlands, USA
- + Summer Programmes @ Partner Institutions
 - + Universities in Sweden, Korea, Finland, France, the Czech Republic
- + Psychology Workshops/Seminar/Competition



ACTIVITIES HIGHLIGHTS

- + Psychology Carnival
- + Orientation activities
- + Programme Assembly



FOUNDATION & CORE COURSES (YEAR 1 ENTRY)



Basic Principles of Psychology

Human Development across the Lifespan

Social Psychology

Biological Psychology

Cognitive Psychology

Counselling and Guidance (Major IC)*

Cross-Faculty Core Course

Statistical Methods in Psychology I & II

Personality Psychology

*Counselling and Guidance (Major IC) (GBA field trip)

FOUNDATION & CORE COURSES (SENIOR ENTRY)



Human Development across the Lifespan

Biological Psychology

Cognitive Psychology

Social Psychology

Counselling and Guidance (Major IC)*

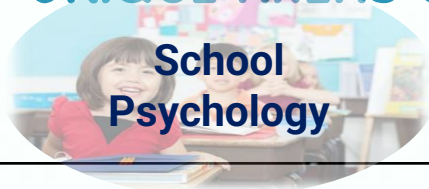
Learning Theories and Processes

Statistical Methods in Psychology I & II

Personality Psychology

*Counselling and Guidance (Major IC) (GBA field trip)

UNIQUE AREAS OF CONCENTRATION



Compulsory courses (6 cps)			
1.	Professional Issues and Practices in Psychology	Professional Issues and Practices in Psychology	Professional Issues and Practices in Psychology
2.	Educational Psychology	Health Psychology	Interpersonal Communication skills
Choose THREE of the following concentration-related courses (9 cps)			
1.	Child and Adolescent Psychopathology	Abnormal Psychology	Cross-cultural Psychology
2.	Stress and Coping	Stress and Coping	Stress and Coping
3.	Psychology of Language	Neuroscience and Psychology	Multicultural Minds in Communication
4.	Learning Theories and Processes	Theory and Practice of Psychotherapy	Industrial and Organizational Psychology
Concentration-related Internship (3 cps)			
Concentration-related Final Year Project (3 cps)			

PROSPECTS

Professionals in

- Business sectors
- Social service sectors
- NGO
- e.g. marketing, customer service, human resources, education and social welfare

Promising Careers

Doctor of Psychology in

- Clinical Psychology
- Educational Psychology

Master of Social Sciences with specialization in :

- Clinical Psychology
- Counselling Psychology
- Educational Psychology
- Industrial-Organisational Psychology

Practitioner Track

Doctor of Philosophy in Psychology

Master of Philosophy in Psychology

Researcher Track

Further Studies

Bachelor of Social Sciences (Honours) in Psychology

GENERAL ENTRANCE REQUIREMENTS

Application on the Strength of HKDSE Results



English Language	Level 3 or above
Chinese Language	Level 3 or above
Mathematics (Compulsory Part)	Level 2 or above
Citizenship and Social Development	Attained
2 Elective Subjects <i>(no more than one Applied Learning subject, excluding Applied Learning Chinese)</i>	Level 2 or above

Applied Learning subject (Category B) graded “Attained with Distinction / Attained with Distinction (I)/(II)” is accepted as one of the elective subjects



GENERAL ENTRANCE REQUIREMENTS – CONTINUED

- + Interview (To be confirmed)
 - + How you present yourself
 - + Motivation and interest
 - + Logic in reasoning
 - + Knowledge in psychology
 - + Confidence
 - + People skill...





THANKS!

Programme Information

Programme Website

<http://www.eduhk.hk/fehd/en/programmes.php?id=150>

Programme Enquiries

Faculty of Education and Human Development

- △ Ms Alice Lam
- △ Email: bsspsy@eduhk.hk
- △ Tel: 2948 8523