



香港教育大學

The Education University
of Hong Kong



JUPAS Code: JS8714 EdUHK Programme Code: A4B095

Bachelor of Science (Honours) in Artificial Intelligence and Educational Technology

[Year 1 Admissions / Senior Year Admissions]



FACULTY OF LIBERAL ARTS AND SOCIAL SCIENCES

博文及社會科學學院

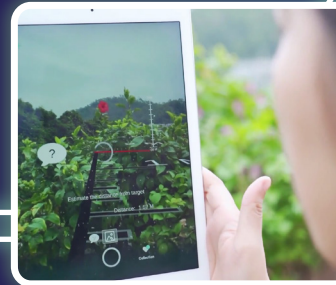
Programme Aims

The programme aims to:

- provide students with fundamental knowledge and skills in artificial intelligence and educational technology;
- develop students' ability in applying knowledge of artificial intelligence and educational technology appropriate to teaching and learning;
- build up students' skills in using appropriate methods of artificial intelligence and educational technology to approach and solve real-world problems in educational contexts; and
- equip students with the capacity to conduct and evaluate educational projects supported by ethical use of artificial intelligence and educational technology.

Programme Features

A key feature of the programme is to provide students with the Internship opportunity to work in relevant organisations, and experiential learning opportunities in collaboration with the organisations and institutions. Through the Internship and experiential learning, students will gain real-world experience that enables them to put what they have learnt from the programme into action.



Programme Structure

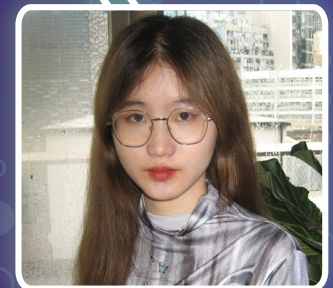
Domain		Year 1 Admissions	Senior Year Admissions
		Credit Points	
Major	• Major Core	36	18
	• Major Electives	6	6
	• Cross-Faculty Core Course	3	/
	• Major Interdisciplinary Course	3	3
	• Internship	6	6
Final Year Project (Honours Project / Capstone Project)		6	6
Second Major* / Minor(s) / Electives		30	15
General Education		22	6
Language Enhancement		9	/
Total		121	60

*Not applicable for Senior Year Admissions

Student's sharing

WANG YunQi (Year 1 student in 2022/23)

Before studying the BSc(AI&EdTech) programme, I had a vague understanding of this aspect. I just felt that the development was in line with reality and was a promising opportunity for the future. After studying at the Education University of Hong Kong for one year, I think the programme provides students with a step-by-step understanding, such as educational technology and calculus in Semester 1 to help us understand the basic knowledge and skills of AI education, and neural network and Python programming in Semester 2 to further supplement the advanced knowledge of AI. The programme makes me more and more interested in this interdisciplinary direction and also provides opportunities for career planning advice, including regular meetings with academic mentors to develop a personalised development plan based on the academic performance of the semester. I believe that after studying in this major for one year, my knowledge level and planning ability have improved, and I have achieved satisfactory results.



Entrance Requirements

Year 1 Admissions

For students with HKDSE qualifications:

Four core subjects and two elective subjects with

- Level 3 or above in English Language, Chinese Language and Mathematics (Compulsory Part);
- “Attained” level in Citizenship and Social Development; and
- Level 2 or above in two elective subjects of which one is from the following subjects [Information and Communication Technology; or Module 1 (M1) or Module 2 (M2) of Mathematics (Extended Part); or one Science subject (i.e. Biology / Chemistry / Physics / Combined Science / Integrated Science)].

Priority consideration will be given to applicants who have taken more than one of the above elective subjects. Applicants should also pass the admission interview.

Senior Year Admissions

Applicants should normally


- hold a recognised post-secondary qualification, such as a Higher Diploma or Associate Degree or equivalent in information technology, statistics or engineering related disciplines with a good GPA; or
- be a final-year student of a recognised Higher Diploma / Associate Degree or equivalent in information technology or engineering related disciplines (subject to successful completion of the programme with good GPA); or
- be a transfer student who is currently enrolled in a Bachelor’s degree or higher degree programme in information technology or engineering related disciplines at a local or non-local university.

Applicants should also fulfil English and/or Chinese language requirement, unless exempted by the University; and pass the admission interview.

Career Prospects

This programme prepares graduates to be capable of taking up technical and support positions (e.g. computer programmer, data scientist, IT technician, software developer, e-learning resources designer, educational technology support, as well as teaching assistant in schools, publishing, community and social services, government and non-governmental organisations), with the possibility to progress further to senior positions like systems analyst and educational technology manager. Graduates can also pursue postgraduate study in the field of AI, education or information technology.

Admission Enquiries


 (852) 2948 6886

 admission@eduhk.hk

 www.apply.eduhk.hk/ug

Programme Enquiries

 Dr David Chan

 (852) 2948 7864

 tsetinchan@eduhk.hk



Every effort has been made to ensure that information contained in this leaflet is correct. Changes to any aspects of the programmes may be made from time to time due to unforeseeable circumstances beyond our control and the University reserves the right to make amendments to any information contained in this leaflet without prior notice. The University accepts no liability for any loss or damage arising from any use or misuse of or reliance on any information contained in this leaflet.

Any aspect of the course and course offerings (including, without limitation, the content of the course and the manner in which the course is taught) may be subject to change at any time at the sole discretion of the University. Without limiting the right of the University to amend the course and its course offerings, it is envisaged that changes may be required due to factors such as staffing, enrolment levels, logistical arrangements, curriculum changes, and other factors caused by unforeseeable circumstances. Tuition fees, once paid, are non-refundable.

[For Year 1 Admissions only] Students admitted into this programme starting from the 2023/24 cohort are required to visit the Greater Bay Area (GBA) and/or other parts of Mainland China. Programme may also require students to participate in other non-local learning experience for completion of the programme. While the visits are heavily subsidised, students are still required to contribute part of the estimated cost of the visits (‘student contribution’), whereas personal entertainment, meals expenses, travel document fee and personal insurance costs will not be supported. The estimated cost of the visits for students admitted to the 2024/25 cohort is not available yet as it is subject to a variety of factors such as changes to the cost of the visits as a result of inflation, trip duration, traveling expenses, the exchange rate, etc. The exact amount of student contribution is thus not available.