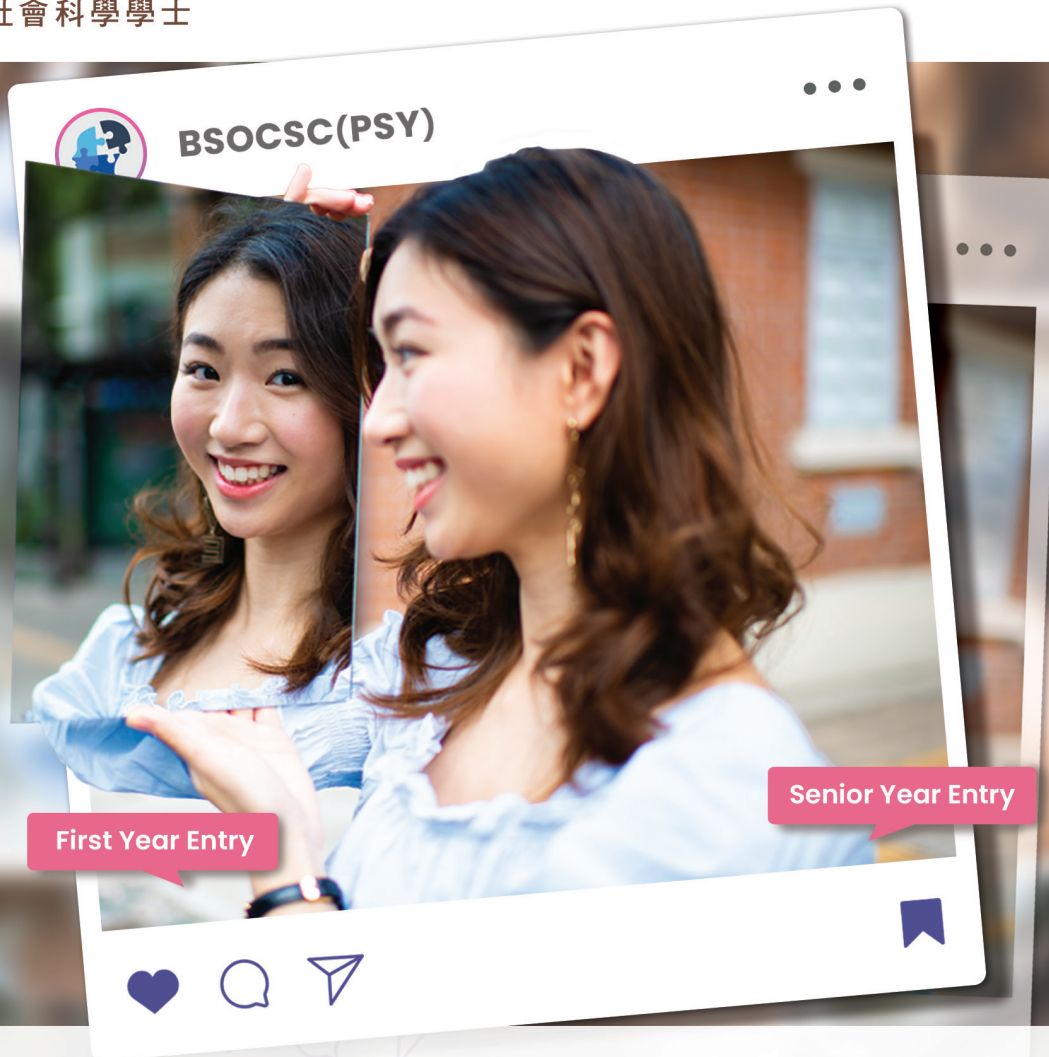


Bachelor of Social Sciences (Honours) in

# Psychology

心理學榮譽社會科學學士



**Target Students:**  
Local and Non-local

**Study Period:**  
4-year Full-time (First Year Entry) /  
2-year Full-time (Senior Year Entry)

**JUPAS Code:**  
JS8651

**EdUHK Programme Code:**  
A4B075

**Tuition Fee:**  
HK\$42,100 per annum (local)  
HK\$140,000 per annum (non-local)  
(provisional and subject to adjustment)

**Enquiry Hotline:**  
(852) 2948 8523

**Email:**  
[bsspsy@eduhk.hk](mailto:bsspsy@eduhk.hk)

**Website:**  
[www.apply.eduhk.hk/ug/programmes/psy](http://www.apply.eduhk.hk/ug/programmes/psy)

Special Features

- ▶ A rigorous programme with a comprehensive curriculum, evidence-based course materials, and a strong emphasis on integration of theory and practice
- ▶ Enthusiastic, dedicated, and supportive teachers
- ▶ Unique areas of concentration
- ▶ Industrial and/or research internship opportunities
- ▶ 1st step towards a promising career as a professional psychologist or in psychology-related fields
- ▶ International exposure and networking opportunities in the Greater Bay Area
- ▶ Qualifies graduates to apply for membership of the Hong Kong Psychological Society and other international psychological associations

Areas of Concentration

- ▶ Health Psychology
- ▶ School Psychology
- ▶ Human Relations and Communication



Programme Structure

First Year Entry		
Foundation and Core Courses *	(including Major Interdisciplinary Course and Cross-Faculty Core Course)	30cps
Major Electives		21cps
Internship		3cps
Final Year Project		6cps
Electives	(including Second Major or Minors)	30cps
General Education		22cps
Language Enhancement		9cps

Total 121cps

Senior Year Entry		
Core Courses *	(including Major Interdisciplinary Course and Cross-Faculty Core Course)	27cps
Major Electives		3cps
Internship		3cps
Final Year Project		6cps
Electives	(including Minor)	15cps
General Education		6cps

Total 60cps

\* Mandatory Greater Bay Area activities in course(s) are required

General Admission Requirements

First Year Entry

HKDSE applicants must have:

- ▶ Level 3 or above in English Language and Chinese Language; AND
- ▶ Level 2 or above in Mathematics (Compulsory Part), Liberal Studies and one elective subject\*

\* Excluding Applied Learning Chinese

The Programme will also consider applicants with recognised qualifications other than HKDSE. For details, please visit [www.eduhk.hk/degree/nonjupas.htm](http://www.eduhk.hk/degree/nonjupas.htm)



Senior Year Entry

The Programme accepts applications from candidates who fulfil the entrance requirements as follows:

- ▶ A recognised post-secondary qualification^ such as an Associate Degree / Higher Diploma or equivalent with a good GPA; or
- ▶ Attending final-year of a recognised Associate Degree / Higher Diploma programme or equivalent (subject to successful completion of the programme with a good GPA); or
- ▶ Transfer students who are currently enrolled in a Bachelor's degree or higher degree programmes at a local or non-local university

^ Normally, qualification which is of Level 4 or above under Qualifications Register (QR) of Hong Kong Council for Accreditation of Academic and Vocational Qualifications (HKCAAVQ).

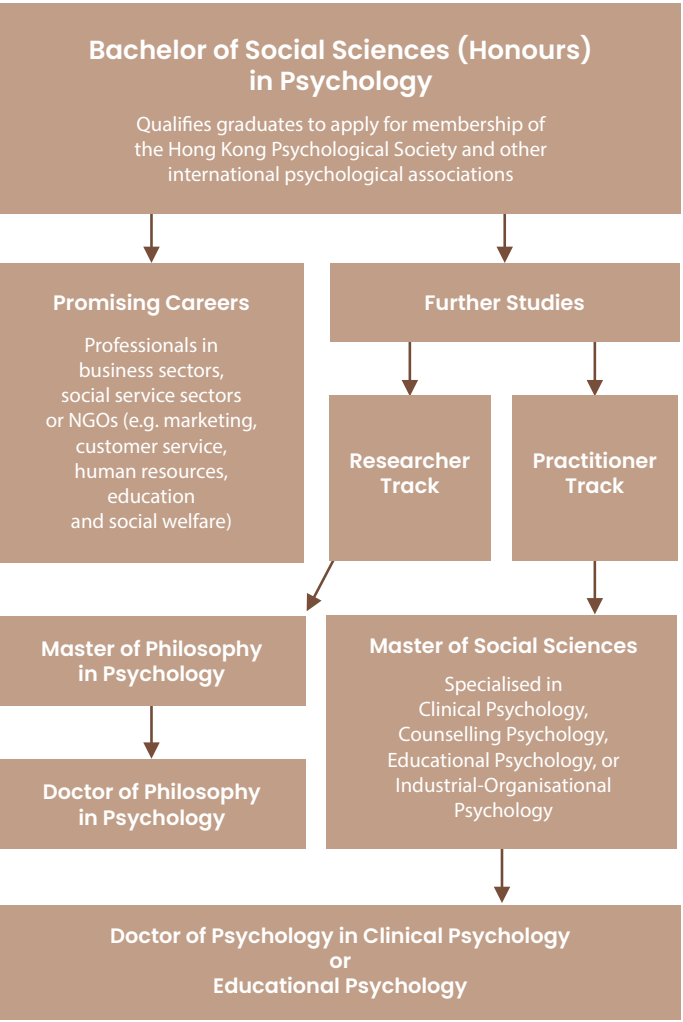
Candidates should also:

- ▶ fulfil English and / or Chinese language requirements, unless exempted by the University; and
- ▶ pass the admission interview and / or the subject test

For details, please visit <https://www.eduhk.hk/degree/senioryear.htm>



Graduation Pathways





The information provided in this booklet is for reference only and is subject to change without prior notice. EdUHK reserves the right of final decision and interpretation in the case of any dispute.

Every effort has been made to ensure that information contained in this booklet is correct. Changes to any aspects of the programmes may be made from time to time due to unforeseeable circumstances beyond our control and the University reserves the right to make amendments to any information contained in this booklet without prior notice. The University accepts no liability for any loss or damage arising from any use or misuse of or reliance on any information in this booklet. In the event of any disputes regarding the booklet content, the University reserves the right to make the final decision.

Any aspect of the course and course offerings (including, without limitation, the content of the course and the manner in which the course is taught) may be subject to change at any time at the sole discretion of the University. Without limiting the right of the University to amend the course and its course offerings, it is envisaged that changes may be required due to factors such as staffing, enrolment levels, logistical arrangements, curriculum changes, and other factors caused by unforeseeable circumstances. Tuition fees, once paid, are non-refundable.

Students admitted into this programme starting from the 2023/24 cohort are required to visit the Greater Bay Area (GBA) and/or other parts of Mainland China. Programme may also require students to participate in other non-local learning experience for completion of the programme. While the visits are heavily subsidised, students are still required to contribute part of the estimated cost of the visits ("student contribution"), whereas personal entertainment, meals expenses, travel document fee and personal insurance costs will not be supported. The estimated cost of the visits for students admitted to the 2023/24 cohort is not available yet as it is subject to a variety of factors such as changes to the cost of the visits as a result of inflation, trip duration, traveling expenses, the exchange rate, etc. The exact amount of student contribution is thus not available.

