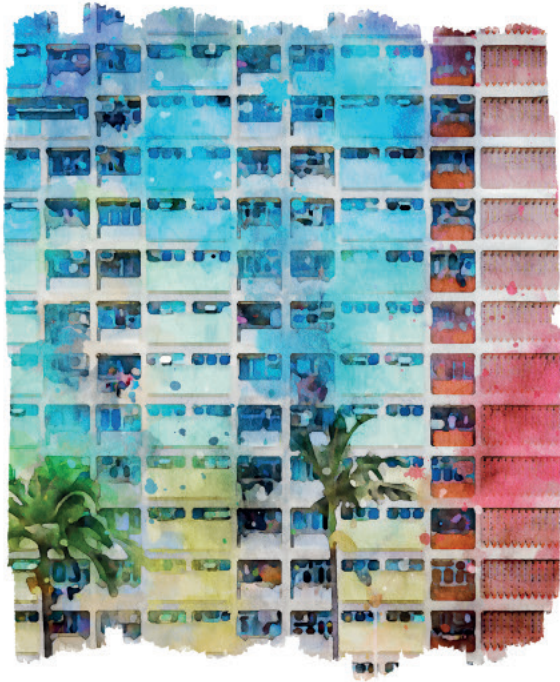


A2B101
Bachelor of Social Sciences (Honours) in
Sociology and Community Studies
(Two-year Full-time)



Bachelor of Social Sciences (Honours) in SOCIOLOGY AND COMMUNITY STUDIES

(Two-year Full-time)



PROGRAMME AIMS

- To equip students with sociological perspectives to understand the transformations and developments of Hong Kong, China and the world;
- To enhance students' conceptual and problem-solving skills with a view to promoting personal growth and community sustainability;
- To develop students' competency in using appropriate research methodologies in social inquiries.

PROGRAMME FEATURES

Sociology-based

Analyses the development of Hong Kong and the regional community with the use of appropriate sociological concepts and theories.

Community-driven

Develops practical and sustainable plans for promoting the betterment of communities at local and regional levels.

Experiential Learning

Enables students to apply their knowledge and skills through participating in internship.





PROGRAMME INTENDED LEARNING OUTCOMES (PILOS)

To align with the University's commitment to whole person development and the framework of "PEER & I", the proposed programme aims to prepare graduates to:

- Analyse social issues and problems facing communities at different levels with the use of appropriate qualitative and quantitative research methods (PILO1);
- Employ major sociological concepts and theories in accounting for contemporary social, cultural, political and economic changes (PILO2);
- Develop evidence-based strategies to enhance quality of life and social well-being in the community (PILO3);
- Demonstrate ethical awareness and positive orientations towards personal growth and community development (PILO4)



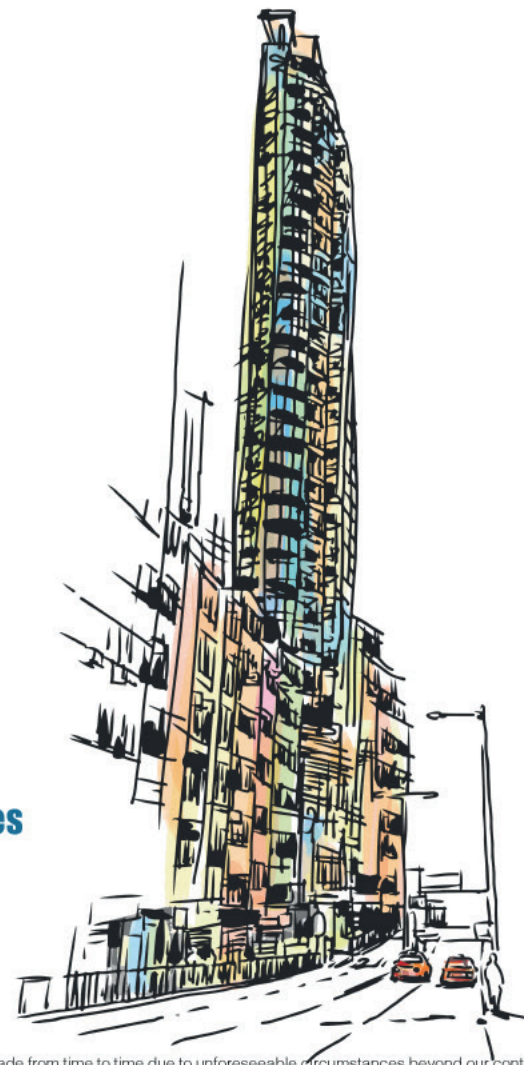
PROGRAMME STRUCTURE

Domain		Credit Points
Major	• Major Core	18
	• Internship	3
	• Major Electives	6
	• Cross-Faculty Core Course	3
	• Major Interdisciplinary Course	3
Final Year Project (Honours Project / Capstone Project)		6
Electives / Minor		15
General Education		6
Total		60


CAREER PROSPECTS

This programme will pay special attention to the fostering of portable skills and generic competencies that could be applied in a wide range of professional settings. The programme's emphasis on equipping students with a full range of research tools, both qualitative and quantitative, will benefit students' career development significantly. Its focus on a sociological perspective in community contexts will also ensure that much of what students learn here would have practical applications.


Graduates can find employment across a wide range of fields, including: community development workers, non-governmental organisation officers, community liaison officers in government departments and public organizations, international aid/development workers, public relations officers, social and marketing researchers, research assistants in academic institutions, and youth workers.



Admission Enquiries

 (852) 2948 6886

 admission@eduhk.hk

 www.apply.eduhk.hk/ug

Programme Enquiries

 (852) 2948 7707

 jclee@eduhk.hk



Every effort has been made to ensure that information contained in this leaflet is correct. Changes to any aspects of the programmes may be made from time to time due to unforeseeable circumstances beyond our control and the University reserves the right to make amendments to any information contained in this leaflet without prior notice. The University accepts no liability for any loss or damage arising from any use or misuse of or reliance on any information contained in this leaflet.

Any aspect of the course and course offerings (including, without limitation, the content of the course and the manner in which the course is taught) may be subject to change at any time at the sole discretion of the University. Without limiting the right of the University to amend the course and its course offerings, it is envisaged that changes may be required due to factors such as staffing, enrolment levels, logistical arrangements, curriculum changes, and other factors caused by unforeseeable circumstances. Tuition fees, once paid, are non-refundable.

Students admitted into this programme starting from the 2023/24 cohort are required to visit the Greater Bay Area (GBA) for a short trip (e.g. 1-day or 2-day 1-night trip) in order to complete the Cross-Faculty Core Course. While the GBA trip is heavily subsidised, students are still required to contribute 18% of the estimated cost of the trip ("student contribution"), whereas personal entertainment, meals expenses, travel document fee and personal insurance costs will not be supported. The estimated cost of the GBA trip for students admitted to the 2023/24 cohort is not available yet as it is subject to a variety of factors such as changes to the cost of the GBA trip as a result of inflation, trip duration, traveling expenses, the exchange rate, etc. The exact amount of student contribution is thus not available.

This programme will be offered under the new "Department of Social Sciences and Policy Studies" effective from 2023/24.