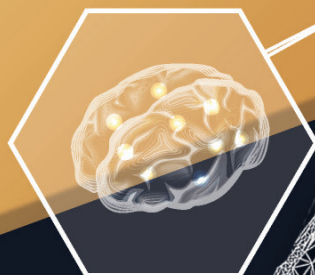




香港教育大學

The Education University  
of Hong Kong



JUPAS Code: JS8726 | EdUHK Programme Code: A4B096

# Bachelor of Science (Honours) in Sports Science and Coaching

[Year 1 Admissions / Senior Year Admissions]



FACULTY OF LIBERAL ARTS AND SOCIAL SCIENCES

博文及社會科學學院

## Career Prospects

Students are prepared for a wide range of careers in the sports industries, including the commercial sector (e.g. sports coach, sports and recreation officer, occupational health & safety consultant, personal trainer, sports event manager, sports marketing consultant, etc.) and public sector (e.g. LCSD assistant leisure services manager, sports science officer, strength and conditioning coach, camp manager, etc.). Graduates may choose to pursue a teaching career by completing an additional year of professional teacher training (e.g. Postgraduate Diploma of Education (Physical Education)) or undertake further studies locally (e.g. Master of Social Sciences in Sports Coaching and Management offered by EdUHK) or overseas.

## Programme Aims

The programme aims to prepare competent sports science and coaching professionals. It equips students with essential knowledge and technology in sports science, coaching, and performance with practical experience. The programme will also address the urgent community and market needs of improving personal performance and health by providing professional guidance and advice through active participation in physical activity, exercise, or sports.





# Programme Features

This programme transforms students into professional coaches through the following iconic features:

1. The internship training opportunities in Hong Kong, the Greater Bay Area, and overseas sports organisations will provide an excellent chance for students to have a dialogue with sports leaders, build connections, enrich knowledge and skills, and lay a foundation for their future careers;
2. Integration of the subject knowledge of sports science, coaching, technology, and life education provides comprehensive training, leading to a wide range of career paths; and
3. Teaching cutting-edge knowledge by a professional team with leading roles in sports and life education allows students to keep ahead of peers and seize opportunities, striving for success and excellence in the academic field(s) and workplace.



# Programme Structure

Domain		Year 1 Admissions	Senior Year Admissions
		Credit Points	
Major	• Major Core	51	27
	• Cross-Faculty Core Course	3	/
	• Major Interdisciplinary Course	3	3
	• Internship	3	3
Final Year Project (Honours Project / Capstone Project)		6	6
Electives / Minor		24	15
General Education		22	6
Language Enhancement		9	/
<b>Total</b>		<b>121</b>	<b>60</b>

# Entrance Requirements

## Year 1 Admissions

For students with HKDSE qualifications:

Four core subjects and one elective subject with

1. Level 3 or above in English Language and Chinese Language; and
2. Level 2 or above in Mathematics (Compulsory Part), Liberal Studies, and one elective subject, preferably in Biology or Physical Education.

Priority consideration will be given to applicants who have taken Biology or Physical Education in HKDSE. Eligible applicants will be invited for the interview.

## Senior Year Admissions

Applicants should normally hold




1. an Associate Degree in related disciplines from any recognized institutions; or
2. a Higher Diploma in related disciplines from any recognized institutions.

Applicants who possess equivalent qualifications will be considered on a case-by-case basis. Eligible applicants will be invited for the interview.

We are **Elite Athlete Friendly University**.  
Elite Athletes are welcome to apply for the programme.



### Admission Enquiries

-  (852) 2948 6886
-  [admission@eduhk.hk](mailto:admission@eduhk.hk)
-  [www.apply.eduhk.hk/ug](http://www.apply.eduhk.hk/ug)

### Programme Enquiries

-  Ms Chan Ka Man Carmen      Mr Lui Ka Ho Nelson
-  (852) 2948 8166      (852) 2948 8754
-  [kamanchan@eduhk.hk](mailto:kamanchan@eduhk.hk)      [khlui@eduhk.hk](mailto:khlui@eduhk.hk)



Every effort has been made to ensure that information contained in this leaflet is correct. Changes to any aspects of the programmes may be made from time to time due to unforeseeable circumstances beyond our control and the University reserves the right to make amendments to any information contained in this leaflet without prior notice. The University accepts no liability for any loss or damage arising from any use or misuse of or reliance on any information contained in this leaflet.

Any aspect of the course and course offerings (including, without limitation, the content of the course and the manner in which the course is taught) may be subject to change at any time at the sole discretion of the University. Without limiting the right of the University to amend the course and its course offerings, it is envisaged that changes may be required due to factors such as staffing, enrolment levels, logistical arrangements, curriculum changes, and other factors caused by unforeseeable circumstances. Tuition fees, once paid, are non-refundable.

[For Year 1 Admissions only] Students admitted into this programme starting from the 2023/24 cohort are required to visit the Greater Bay Area (GBA) for a short trip (e.g. 1-day or 2-day 1-night trip) in order to complete the Cross-Faculty Core Course. While the GBA trip is heavily subsidised, students are still required to contribute 18% of the estimated cost of the trip ("student contribution"), whereas personal entertainment, meals expenses, travel document fee and personal insurance costs will not be supported. The estimated cost of the GBA trip for students admitted to the 2023/24 cohort is not available yet as it is subject to a variety of factors such as changes to the cost of the GBA trip as a result of inflation, trip duration, traveling expenses, the exchange rate, etc. The exact amount of student contribution is thus not available.