

# 社會學與社區研究榮譽社會科學學士

## Bachelor of Social Sciences (Honours) in Sociology and Community Studies

時間: 4:00-5:00pm



# Bachelor of Social Sciences (Honours) in Sociology and Community Studies (Two-year Full-time)

## When Communities Meet Sociology...

Prof CHIU Wing Kai Stephen  
Chair Professor of Sociology

# What is Sociology???



# DAILY NEWS

World - Business - Finance - Lifestyle - Travel - Sport - Weather

Issue: 240104

THE WORLDS BEST SELLING NATIONAL NEWSPAPER

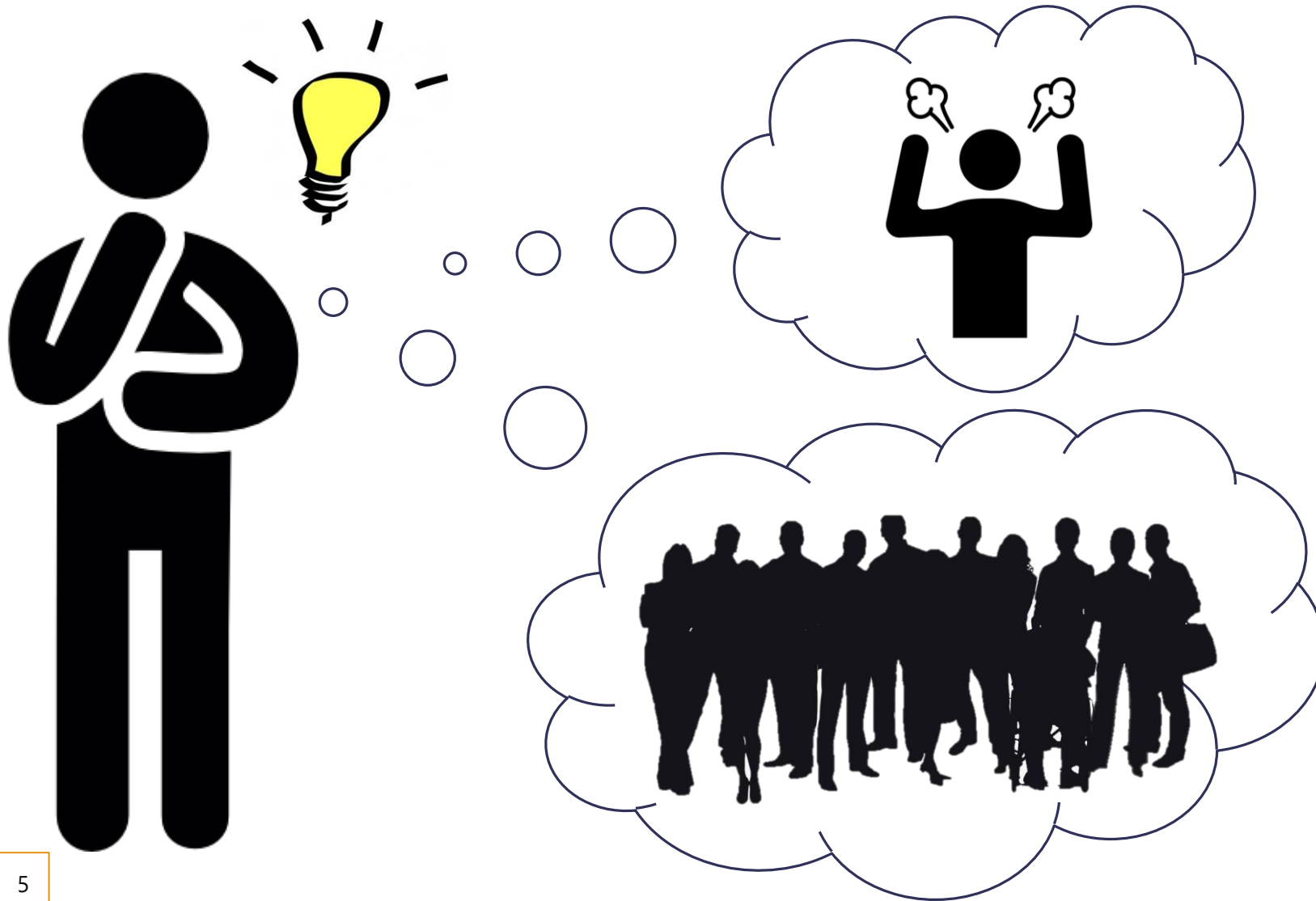
Est - 1965

First Edition

Monday 5th June



# Sociological imagination is ...



Private troubles

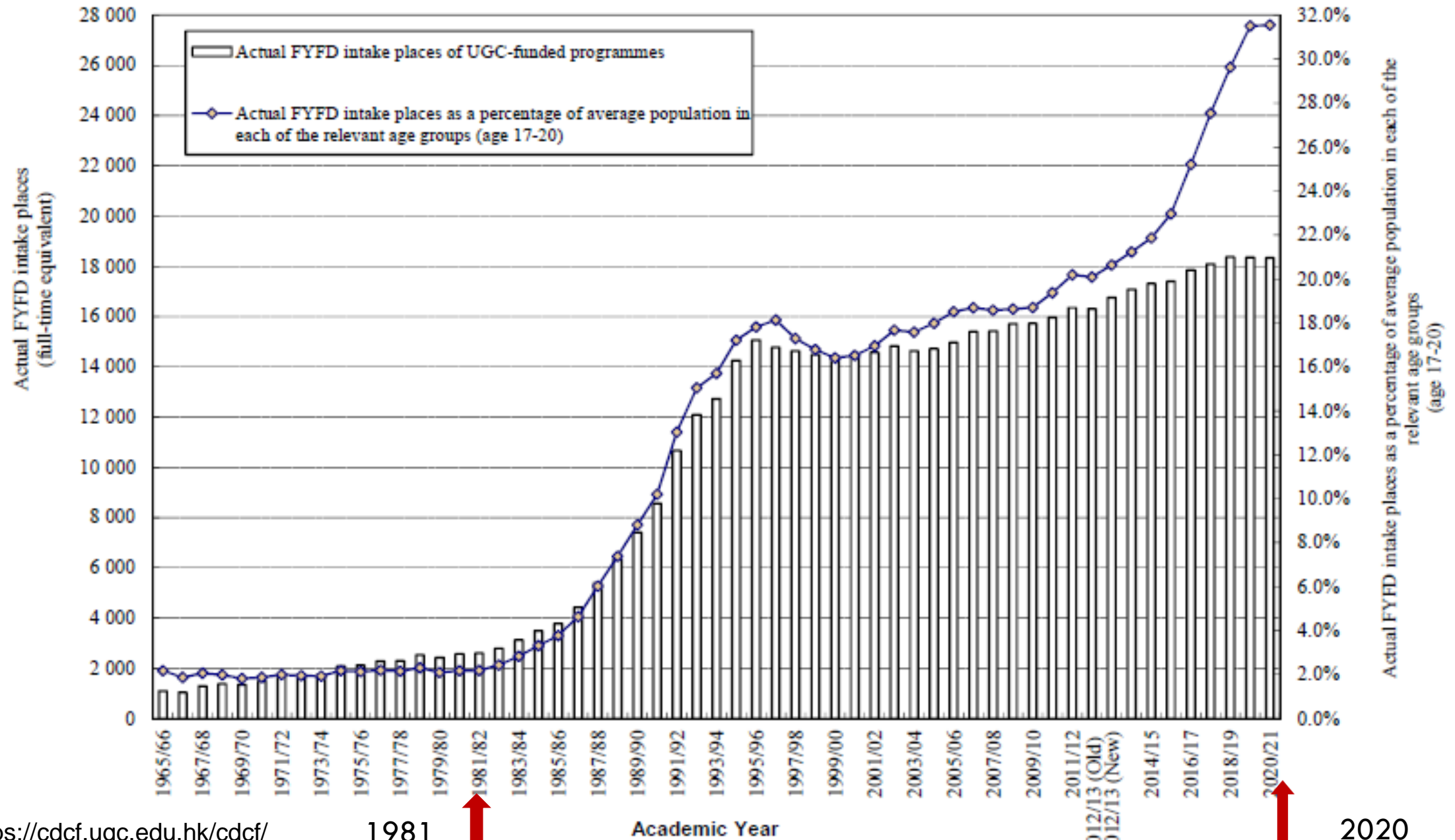


Public issues





## Actual First-year-first-degree (FYFD) Intake Places of UGC-funded Programmes 1965/66 to 2020/21





## 非學位課程

2.1%

毅進文憑／工藝程度

4.2%

文憑／證書課程

20.3%

高級（專業）證書／文憑課程  
及副學士／副學士先修等課程

從非學位課程升讀：  
**10.5%**（佔「高中生」的比例）

高中生

直接升讀：42.3%

大學學位課程

31.2%

沒有升學

8.8%

（佔「高中生」的比例）

以不同途徑  
提升職業技能

文 X 趙永佳 ( <http://liberal-snapshots.blogspot.hk/> )

## 《來自星星》的通識意義



過去一陣子，香港的負面消息甚多，我和很多人一樣，逃避這些負面情緒的方法是「煲劇」。於是上星期我狠下心來「煲」完了剛播完的韓劇《來自星星的你》。

在播放期間，《星星》完全是一社會現象，每天的娛樂版都在大幅報道，大結局前幾天更已經在描述結局是大團圓，好讓粉絲們放心。到了早前「兩會」期間，中央領導人王岐山公開「表白」他也在看《星星》，令本劇不但稱霸娛樂版，也上了中國版，甚至蔓延港聞。



在內地和香港，《星星》的威力充分表現在它的「植入式廣告」如何成功地為韓國輸出文化。由「炸雞配啤酒」到手機與手機 Apps，外景場地，主角在劇中穿著之背包、便服和戶外休閒服品牌，千頌伊所用的化妝品，以至都教授推介的經典文學作品如《九雲夢》等都在劇中出現。

互聯網的威力，在《星星》中表露無遺，但其實對其他電視節目的傳播作用，在粉絲群中也已是心中有數。熱門的節目在節目播放之後，大概一兩天之內，都會有（偉大的）字幕組大人把字幕弄好，並找來片源，將兩者以「外掛」或「內嵌」方式同步後，上載至網站以 BT、網盤或視頻途徑給粉絲們「學習之用」。字幕組大人們的無私奉獻與無償勞動，對我國人民（包括香港）的資訊與娛樂的全球化與對無線電視霸權的打擊，其實比王維基更厲害。現在很多內地電視網

（那時還未有 Yes），流行曲的偶像是中森明菜、小泉今日子（最近在《海女》中重逢、不勝唏噓）、安全地帶，當然還有《龍珠》等動漫。到了2000年後，從《東大特訓班》開始被日劇俘虜，每星期都會上網 update 一次有沒有新作「全集打包」。後來驚豔於《官僚們的夏天》及《派遣員的品格》等社會派日劇，就積極以日劇作教學材料。近年雖然韓劇行情走俏，但我還是堅持對日劇效忠，不過今次終於「失守」了。

情都可以和全球化扯上關係，但我今次要扯上的全球化關係可不是人云亦云的「韓流襲地球」般的老套。我想說的是，《星星》是一個只有在全球化時代才可能發生的故事。

我還記得我在八十年代中到美國留學，和那時的女友（現在的老妻）分隔兩地。那時要互通款曲，只有兩個辦法，一是長途電話，但那時的長途電話費超貴，我的室友每天都打電話給在香港的女友，整月下來，電話費有時達四百多美元（我們當時的港幣金只有



# When Communities Meet Sociology

Community x Sociology

# Individual Level

When was the last time you chatted with your neighbor?



If you are going to bring your friends to visit your community, where would you take them to visit?



# Local Level

In your impression, are the playgrounds in your community fun to play?

When was the last time you involved in a community event?



西環變幻時

Public group · 100.7K members

將軍澳主場

Private group · 127.1K members

大埔 TAI PO

Public group · 64.8K members

# Regional and Global Level



Do you feel you belong to any regional or global communities?

What would you do for the community?



 BTS - "Permission to Dance" performed at the United Nations General Assembly | SD...  
United Nations · 33M views · 1 month ago

Zara Jackson 2 小時前  
The presence of different languages in the comments shows that love can connect us all! ❤️  
👍 9 🗨️ 回覆

# Programme Features



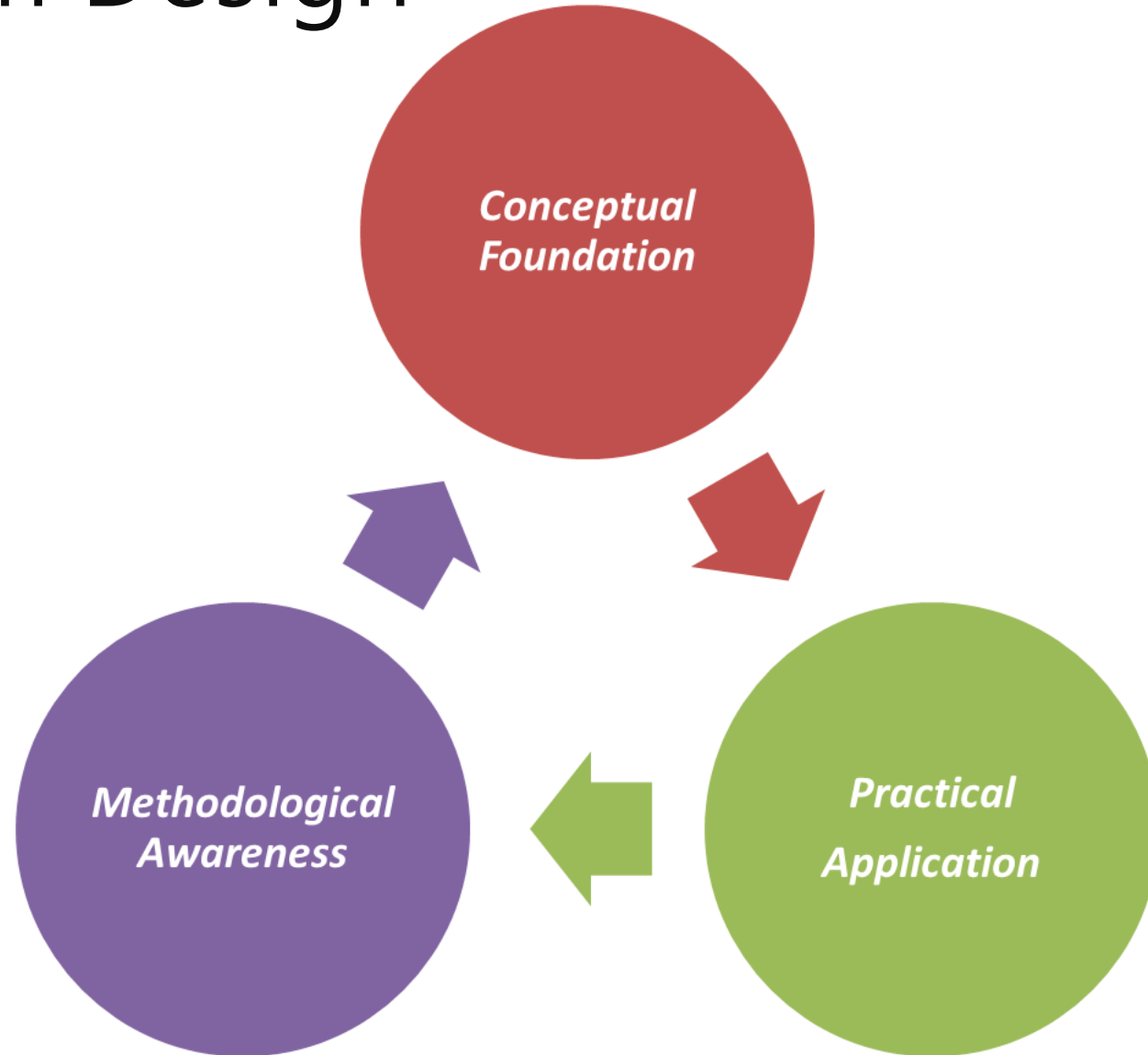
# Programme Aims

The objectives of the BSocSc(SCS) programme are:

- To equip students with **sociological perspectives** to **understand the transformations and developments** of Hong Kong, China and the world;
- To enhance students' **conceptual and problem-solving skills** with a view to promoting personal growth and community sustainability;
- To develop students' competency in **using appropriate research methodologies** in social inquiries



# Curriculum Design





# Curriculum Design

## (2) Methodological Awareness

*Methodological  
Awareness*

Honours  
Project I:  
Introduction  
to Social  
Research



Qualitative  
Research  
Methods



Quantitative  
Research  
Methods



Honours  
Project II:  
Research  
Report



# Curriculum Design

## (3) Practical Application

*Practical  
Application*

- Provide ample opportunities for students to **link their sociological knowledge with different community concerns and opportunities.**



HKTA Yyi Chan Lui Chung Tak  
Memorial School

# Internship Partners of SSC

## Social Service Non-governmental Organisations (NGOs)



## Business Sector



## Deloitte.



## Environmental NGOs



## Social Enterprise



## Education Sector



# Two Optional Minors

## Education and Society

Introduces the linkage between **education, social development and ethics**

## Sustainable Tourism

Introduces the linkage between **the environment, community development and the tourist sector**

# Programme Structure

Domain		Credit Points (cps)
Major	Major Core	21
	Internship	3
	Major Electives	6
	Major Interdisciplinary Course	3
Final Year Project	Honours Project I: Research Methods and Proposal / Capstone Project I: Research Methods and Proposal	3
	Honours Project II: Research Report / Capstone Project II: Project Output	3
Electives / Minor		15
Common Core	University e-Portfolio	3
	General Education (GE) Experiential Learning / GE Breadth Course	3
Total:		60
Information Technology Competence Requirement		

# Academic Mentorship

## Proactive Mentoring Scheme

- Help students **develop a clear vision and plan** of their study and career in the academic and societal context





# Global Learning Enhancement Fund (GLEF)

All with **\$10,000 subsidy** facilitates students in participating in cross-cultural outreach activities



Study Tour in Vancouver (June 2019)



Study Tour in Den Haag,  
the Netherlands (Dec 2019)

# Career Prospects

# Learn, Reflect and Decide on Your Future Pathways



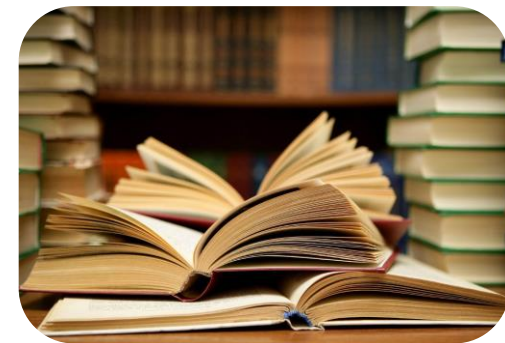
Community-related  
Careers



Diverse Career  
Options



Educational Careers  
via PGDE



Further Studies for  
Professional or  
Academic Pathways



# Entrance Requirements

## Senior Year Admission

- Quality students **holding recognized post-secondary qualifications** or **attending final year of a recognized sub-degree programme** such as Associate Degree / Higher Diploma or equivalent.

## Language Requirements

- Applicants should demonstrate an acceptable level of proficiency in both the Chinese and English languages.

# Key dates of Senior Year Admissions

Date	Event
12 January 2022	Closing Date for Main Round Applications
~ early March 2022	Main round interview
~ May 2022	Second round interview *Subject to availability of places
12 May 2022 (tentative)	Final application deadline

Applications are considered on a rolling-basis  
Please apply as soon as possible

# Bachelor of Social Sciences (Honours) in Sociology and Community Studies



# Survey



[https://eduhk.au1.qualtrics.com/jfe/form/SV\\_cZPlwgdIAXHHTpQ](https://eduhk.au1.qualtrics.com/jfe/form/SV_cZPlwgdIAXHHTpQ)

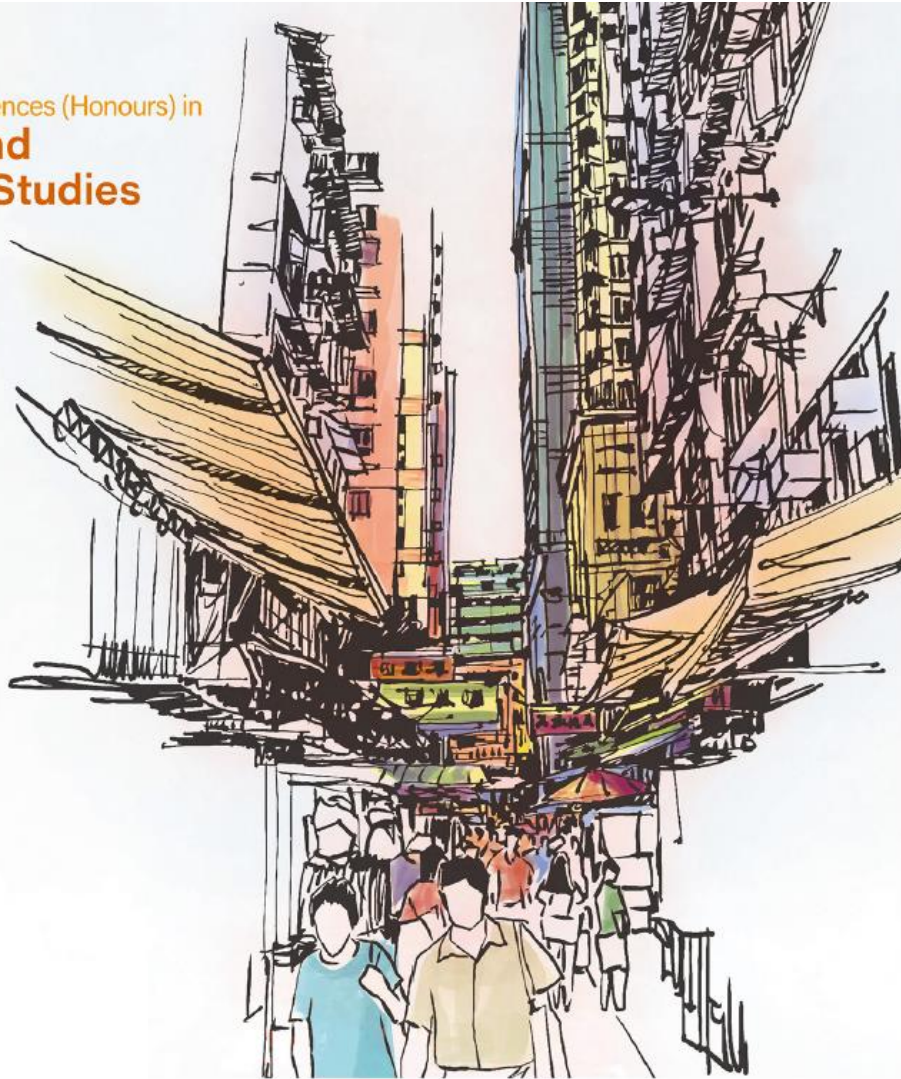
## THANK YOU

A2B101

Bachelor of Social Sciences (Honours) in

## **Sociology and Community Studies**

*(Two-year Full-time)*



## For questions and queries

### Admission-related

Tel: (852) 2948 6886

Email: [admission@eduhk.hk](mailto:admission@eduhk.hk)

### Programme-related

Tel: (852) 2948 7707

Email: [jclee@eduhk.hk](mailto:jclee@eduhk.hk) (Ms. Lee)

More information on the programme's web:

<https://www.apply.eduhk.hk/ug/programmes/scs>

